

**bsm-63078R****[ Primary Antibody ]**

## Aspartate Aminotransferase Recombinant Rabbit mAb

**BioSS**  
**ANTIBODIES**

www.bioss.com.cn

sales@bioss.com.cn

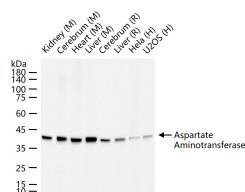
techsupport@bioss.com.cn

400-901-9800

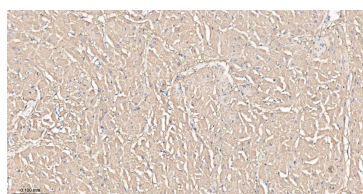
### — DATASHEET —

**Host:** Rabbit**Isotype:** IgG**Clonality:** Recombinant**CloneNo.:** 2F11**GeneID:** 2805**SWISS:** P17174**Target:** Aspartate Aminotransferase**Immunogen:** A synthesized peptide derived from human GOT1: 150-230/413.**Purification:** affinity purified by Protein A**Concentration:** 1mg/ml**Storage:** 10mM phosphate buffered saline , pH 7.4, 150mM sodium chloride, 0.05% BSA, 0.02% Proclin300 and 50% glycerol.  
Shipped at 4°C. Store at -20°C for one year. Avoid repeated freeze/thaw cycles.**Background:** Aspartate Aminotransferase [Glutamate oxaloacetate transaminase] is a ubiquitous pyridoxal phosphate-dependent enzyme which exists in both mitochondrial and cytosolic forms. The enzyme plays an important role in amino acid metabolism and in the urea and tricarboxylic acid cycles. The 2 isoenzymes are homodimeric. In liver about 80% of the enzyme activity is mitochondrial in origin, whereas in serum the enzyme activity is largely cytosolic. Although the mitochondrial and soluble forms of GOT are coded by different chromosomes, the 2 show close homology in amino acid sequence and were presumably derived from a common ancestral gene.**Applications:** WB (1:500-2000)**IHC-P** (1:100-500)**IHC-F** (1:100-500)**IF** (1:100-500)**Flow-Cyt** (1:50-100)**ICC/IF** (1:50-200)**Reactivity:** Human, Mouse, Rat**Predicted MW.:** 46 kDa**Subcellular Location:** Cytoplasm

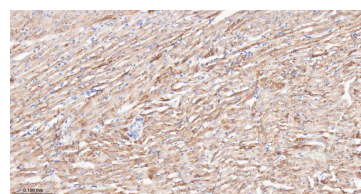
### — VALIDATION IMAGES —



25 ug total protein per lane of various lysates (see on figure) probed with Aspartate Aminotransferase monoclonal antibody, unconjugated (bsm-63078R) at 1:1000 dilution and 4°C overnight incubation. Followed by conjugated secondary antibody incubation at r.t. for 60 min.



Paraformaldehyde-fixed, paraffin embedded Human Heart; Antigen retrieval by boiling in sodium citrate buffer (pH6.0) for 15 min; Antibody incubation with Aspartate Aminotransferase Monoclonal Antibody, Unconjugated (bsm-63078R) at 1:200 overnight at 4°C, followed by conjugation to the bs-0295G-HRP and DAB (C-0010) staining.



Paraformaldehyde-fixed, paraffin embedded Rat Heart; Antigen retrieval by boiling in sodium citrate buffer (pH6.0) for 15 min; Antibody incubation with Aspartate Aminotransferase Monoclonal Antibody, Unconjugated (bsm-63078R) at 1:200 overnight at 4°C, followed by conjugation to the bs-0295G-HRP and DAB (C-0010) staining.