

[Primary Antibody]

BACE1 Recombinant Rabbit mAb



BioSS
ANTIBODIES

www.bioss.com.cn

sales@bioass.com.cn

techsupport@bioss.com.cn

400-901-9800

— DATASHEET

Host: Rabbit

Isotype: IgG

Clonality: Recombinant

CloneNo.: 13F6

GeneID: 23621

SWISS: P56817

Target: BACE1

Immunogen: A synthesized peptide derived from human BACE1: 450-501.

Purification: affinity purified by Protein A

Concentration: 1mg/ml

Storage: 10mM phosphate buffered saline , pH 7.4, 150mM sodium chloride, 0.05% BSA, 0.02% Proclin300 and 50% glycerol.
Shipped at 4°C. Store at -20°C for one year. Avoid repeated freeze/thaw cycles.

Background: Cerebral deposition of amyloid beta peptide is an early and critical feature of Alzheimer's disease. Amyloid beta peptide is generated by proteolytic cleavage of amyloid precursor protein (APP) by two proteases, one of which is the protein encoded by this gene. The encoded protein, a member of the peptidase A1 protein family, is a type I integral membrane glycoprotein and aspartic protease that is found mainly in the Golgi. Multiple transcript variants encoding different isoforms have been described for this gene. [provided by RefSeq].

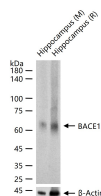
Applications: WB (1:500-2000)

Reactivity: Mouse, Rat
(predicted: Human)

Predicted MW.: 56 kDa

Subcellular Location: Cell membrane ,Cytoplasm

— VALIDATION IMAGES



25 µg total protein per lane of various lysates (see on figure) probed with BACE1 monoclonal antibody, unconjugated (bsm-63071R) at 1:2000 dilution and 4°C overnight incubation. Followed by conjugated secondary antibody incubation at r.t. for 60 min.