

bs-6165R**[Primary Antibody]****GTPase HRAS Rabbit pAb****Bioss**
ANTIBODIES

www.bioss.com.cn

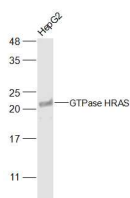
sales@bioss.com.cn

techsupport@bioss.com.cn

400-901-9800

— DATASHEET —

Host: Rabbit	Isotype: IgG	Applications: WB (1:500-2000)
Clonality: Polyclonal		Reactivity: Human (predicted: Mouse, Rat, Cow, Chicken, Horse)
GeneID: 4893	SWISS: P01111	
Target: GTPase HRAS		Predicted MW.: 21 kDa
Immunogen: KLH conjugated synthetic peptide derived from human HRAS+KRAS: 51-150/189.		Subcellular Location: Cell membrane ,Cytoplasm
Purification: affinity purified by Protein A		
Concentration: 1mg/ml		
Storage: 0.01M TBS (pH7.4) with 1% BSA, 0.02% Proclin300 and 50% Glycerol. Shipped at 4°C. Store at -20°C for one year. Avoid repeated freeze/thaw cycles.		
Background: N-RAS (neuroblastoma RAS viral oncogene homolog) analogously to other GTP-binding proteins (such as Translation Elongation Factor EFTu or signal transducing G-Proteins) RAS proteins are involved in signal transduction pathways, ras gene family is part of the ras superfamily including the mammalian RAS, RAL, RAC, RHO, RAP, and RAB gene families and the yeast homologs like SEC4 and YPT1 genes; genes encode small monomeric proteins of low molecular mass (20-30 kDa) which share at least 30% homology to RAS proteins.		

— VALIDATION IMAGES —

Sample: HepG2(Human) Cell Lysate at 30 ug
Primary: Anti-GTPase HRAS (bs-6165R) at 1/500
dilution Secondary: IRDye800CW Goat Anti-
Rabbit IgG at 1/20000 dilution Predicted band
size: 21 kD Observed band size: 21 kD