

bs-2957R**[Primary Antibody]****SCNN1A Rabbit pAb****BioSS**
ANTIBODIES

www.bioss.com.cn

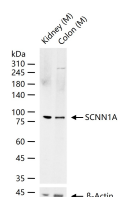
sales@bioss.com.cn

techsupport@bioss.com.cn

400-901-9800

DATASHEET

Host: Rabbit	Isotype: IgG	Applications: WB (1:200-1000)
Clonality: Polyclonal		Reactivity: Mouse (predicted: Human, Rat)
GeneID: 6337	SWISS: P37088	
Target: SCNN1A		Predicted MW.: 76 kDa
Immunogen: KLH conjugated synthetic peptide derived from human Alpha-ENaC: 201-300/669.		Subcellular Location: Cell membrane
Purification: affinity purified by Protein A		
Concentration: 1mg/ml		
Storage: 0.01M TBS (pH7.4) with 1% BSA, 0.02% Proclin300 and 50% Glycerol. Shipped at 4°C. Store at -20°C for one year. Avoid repeated freeze/thaw cycles.		
Background: Sodium permeable non-voltage-sensitive ion channel inhibited by the diuretic amiloride. Mediates the electrodiffusion of the luminal sodium (and water, which follows osmotically) through the apical membrane of epithelial cells. Controls the reabsorption of sodium in kidney, colon, lung and sweat glands. Also plays a role in taste perception.		

VALIDATION IMAGES

25 ug total protein per lane of various lysates (see on figure) probed with SCNN1A polyclonal antibody, unconjugated (bs-2957R) at 1:500 dilution and 4°C overnight incubation. Followed by conjugated secondary antibody incubation at r.t. for 60 min.

SELECTED CITATIONS

- **[IF=9.429]** Qian, ZhiZhi. et al. Protein nanoparticle-induced osmotic pressure gradients modify pulmonary edema through hyperpermeability in acute respiratory distress syndrome. J NANOBIOECHANOL. 2022 Dec;20(1):1-21 WB ;Human. 35794575
- **[IF=6.208]** Benedikt Fels. et al. Effects of Chronic Kidney Disease on Nanomechanics of the Endothelial Glycocalyx Are Mediated by the Mineralocorticoid Receptor. INT J MOL SCI. 2022 Jan;23(18):10659 IF ;Human. 36142571
- **[IF=5.6]** Yu-qiong He. et al. Ursodeoxycholic acid alleviates sepsis-induced lung injury by blocking PANoptosis via STING pathway. INT IMMUNOPHARMACOL. 2023 Dec;125:111161 WB ;Mouse. 37948864
- **[IF=3.061]** Fang Q et al. pre-B cell colony enhancing factor negatively regulates Na and fluid transport in lung epithelial cells. Am J Transl Res. 2018 Jul 15;10(7):2047-2054. eCollection 2018. ICC,WB ;Rat. 30093942
- **[IF=3.115]** Zhen-zhenChen et al. Bu Yang Huan Wu Decoction prevents reperfusion injury following ischemic stroke in rats via inhibition of HIF-1 α , VEGF and promotion β -ENaC expression (2018)Journal of Ethnopharmacology Sep

Important Note: This product as supplied is intended for research use only, not for use in human, therapeutic or diagnostic applications.

13;228:70-81. WB ;Rat. 30218809