

bsm-33041R**[Primary Antibody]**

Bioss
ANTIBODIES

www.bioss.com.cn

sales@bioss.com.cn

techsupport@bioss.com.cn

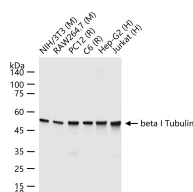
400-901-9800

beta I Tubulin Recombinant Rabbit mAb, Loading Control

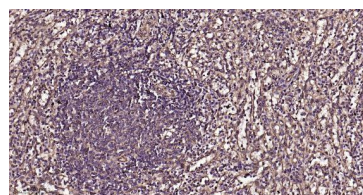
DATASHEET

Host: Rabbit	Isotype: IgG	Applications: WB (1:5000-100000) IHC-P (1:100-500) IHC-F (1:100-500) IF (1:100-500) Flow-Cyt (1 μ g/Test) ICC/IF (1:100-500)
Clonality: Recombinant	CloneNo.: 5F7	
GeneID: 81027	SWISS: Q9H4B7	
Target: beta I Tubulin		
Purification: affinity purified by Protein A		
Concentration: 1mg/ml		Reactivity: Human, Mouse, Rat
Storage: 0.01M TBS (pH7.4) with 1% BSA, 0.02% Proclin300 and 50% Glycerol. Shipped at 4°C. Store at -20°C for one year. Avoid repeated freeze/thaw cycles.		Predicted MW.: 50 kDa
Background: This gene encodes a member of the beta tubulin protein family. Beta tubulins are one of two core protein families (alpha and beta tubulins) that heterodimerize and assemble to form microtubules. This protein is specifically expressed in platelets and megakaryocytes and may be involved in proplatelet production and platelet release. A mutations in this gene is associated with autosomal dominant macrothrombocytopenia. Two pseudogenes of this gene are found on chromosome Y.[provided by RefSeq, Jul 2010]		Subcellular Location: Cytoplasm

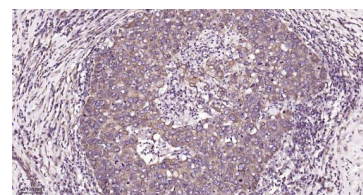
VALIDATION IMAGES



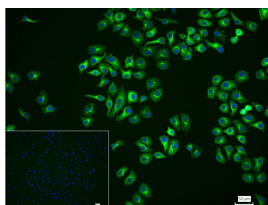
25 μ g total protein per lane of various lysates (see on figure) probed with beta I Tubulin monoclonal antibody, unconjugated (bsm-33041R) at 1:50000 dilution and 4°C overnight incubation. Followed by conjugated secondary antibody incubation at r.t. for 60 min.



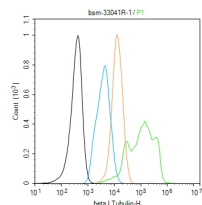
Paraformaldehyde-fixed, paraffin embedded Human Spleen; Antigen retrieval by boiling in sodium citrate buffer (pH6.0) for 15 min; Antibody incubation with beta I Tubulin Monoclonal Antibody, Unconjugated(bsm-33041R) at 1:200 overnight at 4°C, followed by conjugation to the bs-0295G-HRP and DAB (C-0010) staining.



Paraformaldehyde-fixed, paraffin embedded Human Breast Cancer; Antigen retrieval by boiling in sodium citrate buffer (pH6.0) for 15 min; Antibody incubation with beta I Tubulin Monoclonal Antibody, Unconjugated(bsm-33041R) at 1:200 overnight at 4°C, followed by conjugation to the bs-0295G-HRP and DAB (C-0010) staining.



4% Paraformaldehyde-fixed HepG2 (H) cell; Triton X-100 at r.t. for 20 min; Antibody incubation with (beta I Tubulin) monoclonal Antibody, unconjugated (bsm-33041R) 1:100, 90 min at 37°C; followed by conjugated Goat Anti-Rabbit IgG antibody (green, bs-40295G-FITC) at 37°C for 90 min, DAPI (blue, C02-04002) was used to stain the cell nuclei. PBS instead of the primary antibody was used as the blank control.



The HepG2 (H) cells were fixed with 4% PFA (10 min at r.t.) and then permeabilized with 90% ice-cold methanol for 20 min at -20°C, the cells then were incubated in 5%BSA to block non-specific protein-protein interactions (30 min at r.t.). Primary Antibody (green): Rabbit Anti-beta I Tubulin antibody (bsm-33041R): 1 μ g/10⁶ cells; Secondary Antibody (white blue): Goat anti-Rabbit IgG-BF488 (bs-60295G-BF488): 1 μ g/test. Isotype Control (orange): Rabbit IgG (bs-0295P). Blank control (black): PBS. Acquisition of 20,000

Important Note: This product as supplied is intended for research use only, not for use in human, therapeutic or diagnostic applications.

events was performed.