

**bs-2943R****[ Primary Antibody ]****SEMA6D Rabbit pAb****BioSS**  
**ANTIBODIES**

www.bioss.com.cn

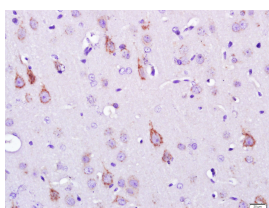
sales@bioss.com.cn

techsupport@bioss.com.cn

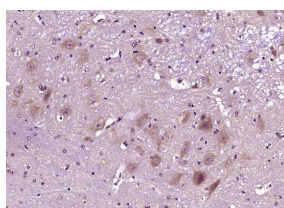
400-901-9800

**— DATASHEET —**

<b>Host:</b> Rabbit <b>Clonality:</b> Polyclonal <b>GeneID:</b> 80031 <b>Target:</b> SEMA6D <b>Immunogen:</b> KLH conjugated synthetic peptide derived from human SEMA6D: 801-900/1073. <b>Purification:</b> affinity purified by Protein A <b>Concentration:</b> 1mg/ml <b>Storage:</b> 0.01M TBS (pH7.4) with 1% BSA, 0.02% Proclin300 and 50% Glycerol. Shipped at 4°C. Store at -20°C for one year. Avoid repeated freeze/thaw cycles. <b>Background:</b> Semaphorins are a large family, including both secreted and membrane associated proteins, many of which have been implicated as inhibitors or chemorepellents in axon pathfinding, fasciculation and branching, and target selection. All semaphorins possess a semaphorin (Sema) domain and a PSI domain (found in plexins, semaphorins and integrins) in the N-terminal extracellular portion. Additional sequence motifs C-terminal to the semaphorin domain allow classification into distinct subfamilies. Results demonstrate that transmembrane semaphorins, like the secreted ones, can act as repulsive axon guidance cues. This gene encodes a class 6 vertebrate transmembrane semaphorin that demonstrates alternative splicing. Several transcript variants have been identified and expression of the distinct encoded isoforms is thought to be regulated in a tissue- and development-dependent manner. [provided by RefSeq, Nov 2010]	<b>Isotype:</b> IgG <b>SWISS:</b> Q8NFY4 <b>Applications:</b> <b>IHC-P</b> (1:100-500) <b>IHC-F</b> (1:100-500) <b>IF</b> (1:100-500) <b>Reactivity:</b> Mouse, Rat (predicted: Human, Pig, Cow, Dog, Horse) <b>Predicted MW.:</b> 118 kDa <b>Subcellular Location:</b> Cell membrane ,Cytoplasm
---	--

**— VALIDATION IMAGES —**

Paraformaldehyde-fixed, paraffin embedded (rat brain); Antigen retrieval by boiling in sodium citrate buffer (pH6.0) for 15min; Block endogenous peroxidase by 3% hydrogen peroxide for 20 minutes; Blocking buffer (normal goat serum) at 37°C for 30min; Antibody incubation with (SEMA6D) Polyclonal Antibody, Unconjugated (bs-2943R) at 1:500 overnight at 4°C, followed by a conjugated secondary (sp-0023) for 20 minutes and DAB staining.



Paraformaldehyde-fixed, paraffin embedded (Mouse cerebellum); Antigen retrieval by boiling in sodium citrate buffer (pH6.0) for 15min; Block endogenous peroxidase by 3% hydrogen peroxide for 20 minutes; Blocking buffer (normal goat serum) at 37°C for 30min; Antibody incubation with (SEMA6D) Polyclonal Antibody, Unconjugated (bs-2943R) at 1:400 overnight at 4°C, followed by operating according to SP Kit(Rabbit) (sp-0023) instructions and DAB staining.

**— SELECTED CITATIONS —**

- **[IF=5.2]** Baoling Bai. et al. Pathological mechanisms of type 1 diabetes in children: investigation of the exosomal protein expression profile. FRONT ENDOCRINOL. 2023; 14: 1271929 WB ;Human. 37886648
- **[IF=4.243]** Jiachen Duan. et al. Semaphorin 6D as an independent predictor for better prognosis in clear cell renal cell

Important Note: This product as supplied is intended for research use only, not for use in human, therapeutic or diagnostic applications.

carcinoma. TRANSL ONCOL. 2022 Aug;22:101453 IHC ;Human. 35605459