

bsm-41830M**[Primary Antibody]****Bioss**
ANTIBODIES

www.bioss.com.cn

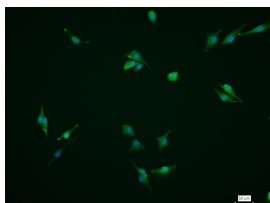
sales@bioss.com.cn

techsupport@bioss.com.cn

400-901-9800

Alpha-synuclein Mouse mAb**— DATASHEET —**

Host: Mouse	Isotype: IgG	Applications: ICC/IF (1:50-200) Reactivity: Human Predicted MW.: 14 kDa Subcellular Location: Cell membrane ,Cytoplasm ,Nucleus
Clonality: Monoclonal	CloneNo.: 2A8	
GeneID: 6622	SWISS: P37840	
Target: Alpha-synuclein		
Purification: affinity purified by Protein A		
Storage: 0.01M TBS (pH7.4) with 1% BSA, 0.02% Proclin300 and 50% Glycerol. Shipped at 4°C. Store at -20°C for one year. Avoid repeated freeze/thaw cycles.		
Background: Alpha-synuclein is a member of the synuclein family, which also includes beta- and gamma-synuclein. Synucleins are abundantly expressed in the brain and alpha- and beta-synuclein inhibit phospholipase D2 selectively. SNCA may serve to integrate presynaptic signaling and membrane trafficking. Defects in SNCA have been implicated in the pathogenesis of Parkinson disease. SNCA peptides are a major component of amyloid plaques in the brains of patients with Alzheimer's disease. Alternatively spliced transcripts encoding different isoforms have been identified for this gene. [provided by RefSeq, Feb 2016]		

— VALIDATION IMAGES —

4% Paraformaldehyde-fixed SK-MEL-28 (H) cell;
Triton X-100 at r.t. for 20 min; Antibody
incubation with (Alpha-synuclein) monoclonal
Antibody, unconjugated (bsm-41830M) 1:100, 90
min at 37°C; followed by conjugated Goat Anti-
Mouse IgG antibody (green, bs-40296G-FITC) at
37°C for 90 min, DAPI (blue, C02-04002) was used
to stain the cell nuclei. PBS instead of the
primary antibody was used as the blank control.