

bsm-41829M**[Primary Antibody]****BioSS**
ANTIBODIES

www.bioss.com.cn

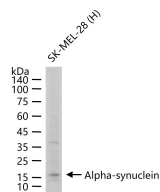
sales@bioss.com.cn

techsupport@bioss.com.cn

400-901-9800

Alpha-synuclein Mouse mAb**— DATASHEET —**

Host: Mouse	Isotype: IgG	Applications: WB (1:500-2000) ELISA (1:5000-10000) Reactivity: Human Predicted MW.: 14 kDa Subcellular Location: Cell membrane ,Cytoplasm ,Nucleus
Clonality: Monoclonal	CloneNo.: 8F7	
GeneID: 6622	SWISS: P37840	
Target: Alpha-synuclein		
Purification: affinity purified by Protein A		
Storage: 0.01M TBS (pH7.4) with 1% BSA, 0.02% Proclin300 and 50% Glycerol. Shipped at 4°C. Store at -20°C for one year. Avoid repeated freeze/thaw cycles.		
Background: Alpha-synuclein is a member of the synuclein family, which also includes beta- and gamma-synuclein. Synucleins are abundantly expressed in the brain and alpha- and beta-synuclein inhibit phospholipase D2 selectively. SNCA may serve to integrate presynaptic signaling and membrane trafficking. Defects in SNCA have been implicated in the pathogenesis of Parkinson disease. SNCA peptides are a major component of amyloid plaques in the brains of patients with Alzheimer's disease. Alternatively spliced transcripts encoding different isoforms have been identified for this gene. [provided by RefSeq, Feb 2016]		

— VALIDATION IMAGES —

25 ug total protein per lane of various lysates (see on figure) probed with Alpha-synuclein monoclonal antibody, unconjugated (bsm-41829M) at 1:1000 dilution and 4°C overnight incubation. Followed by conjugated secondary antibody incubation at r.t. for 60 min.