

bsm-10846R**[Primary Antibody]****Bioss**
ANTIBODIES

www.bioss.com.cn

sales@bioss.com.cn

techsupport@bioss.com.cn

400-901-9800

Bcl-2 Recombinant Rabbit mAb**— DATASHEET —****Host:** Rabbit**Isotype:** IgG**Clonality:** Recombinant**CloneNo.:** 3E3**GeneID:** 596**SWISS:** P10415**Target:** Bcl-2**Immunogen:** Recombinant human Bcl-2 protein: 1-211/239.**Purification:** affinity purified by Protein A**Storage:** Shipped at 4°C. Store at -20°C for one year. Avoid repeated freeze/thaw cycles

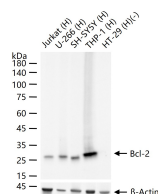
Background: The Bcl-2 gene was isolated at the chromosomal breakpoint of t(14;18)-bearing follicular B cell lymphomas(1,2). Bcl-2 blocks cell death following a variety of stimuli and confers a death-sparing effect to certain hematopoietic cell lines following growth factor withdrawal (3,5). Bcl-2 appears to function in several subcellular locations yet lacks any known motifs that would confer insight into its mechanism of action (6,7). A more recently identified protein, designated Bax p21 (i.e., Bcl-associated X protein), has extensive amino acid homology with Bcl-2 and both homodimerizes and forms heterodimers with Bcl-2(8). Overexpression of Bax accelerates apoptotic death induced by cytokine deprivation in an IL-3 dependent cell line and Bax also counters the death repressor activity of Bcl-2(8).

Applications: WB (1:500-2000)
IHC-P (1:100-500)
IHC-F (1:100-500)
IF (1:100-500)

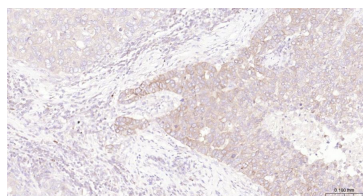
Reactivity: Human

Predicted
MW.: 26 kDa

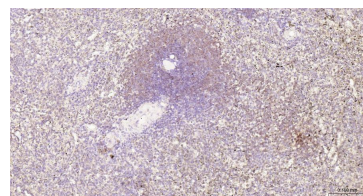
Subcellular Cell membrane ,Cytoplasm
Location: ,Nucleus

— VALIDATION IMAGES —

25 ug total protein per lane of various lysates (see on figure) probed with Bcl-2 monoclonal antibody, unconjugated (bsm-10846R) at 1:1000 dilution and 4°C overnight incubation. Followed by conjugated secondary antibody incubation at r.t. for 60 min.



Paraformaldehyde-fixed, paraffin embedded Human Breast Cancer; Antigen retrieval by boiling in sodium citrate buffer (pH6.0) for 15 min; Antibody incubation with Bcl-2 Monoclonal Antibody, Unconjugated (bsm-10846R) at 1:200 overnight at 4°C, followed by conjugation to the bs-0295G-HRP and DAB (C-0010) staining.



Paraformaldehyde-fixed, paraffin embedded Human spleen; Antigen retrieval by boiling in sodium citrate buffer (pH6.0) for 15 min; Antibody incubation with Bcl-2 Monoclonal Antibody, Unconjugated (bsm-10846R) at 1:200 overnight at 4°C, followed by conjugation to the bs-0295G-HRP and DAB (C-0010) staining.