

bs-6180R**[Primary Antibody]****Rab3A+Rab3B+Rab3C+Rab3D Rabbit pAb****Bioss**
ANTIBODIES

www.bioss.com.cn

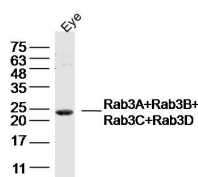
sales@bioss.com.cn

techsupport@bioss.com.cn

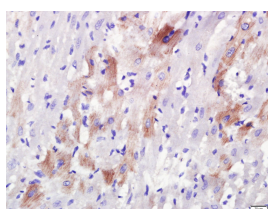
400-901-9800

DATASHEET

Host: Rabbit	Isotype: IgG	Applications: WB (1:500-2000) IHC-P (1:100-500) IHC-F (1:100-500) IF (1:100-500)
Clonality: Polyclonal		
GeneID: 5864	SWISS: P20336	
Target: Rab3A+Rab3B+Rab3C+Rab3D		
Immunogen: KLH conjugated synthetic peptide derived from human Rab3A+Rab3B+Rab3C+Rab3D: 101-150/220.		
Purification: affinity purified by Protein A		Reactivity: Mouse, Rat (predicted: Human)
Concentration: 1mg/ml		Predicted MW.: 24-27 kDa
Storage: 0.01M TBS (pH7.4) with 1% BSA, 0.02% Proclin300 and 50% Glycerol. Shipped at 4°C. Store at -20°C for one year. Avoid repeated freeze/thaw cycles.		Subcellular Location: Cell membrane
Background: RAB3A (RAB3A, Member RAS Oncogene Family) is a Protein Coding gene. Diseases associated with RAB3A include Growth Hormone Deficiency, Isolated, Type II. Among its related pathways are Innate Immune System and Neurotransmitter Release Cycle. GO annotations related to this gene include GTP binding and protein C-terminus binding. An important paralog of this gene is RAB3C.		

VALIDATION IMAGES

Sample: Eye (Mouse) Lysate at 40 ug Primary: Anti-Rab3A+Rab3B+Rab3C+Rab3D (bs-6180R) at 1/300 dilution Secondary: IRDye800CW Goat Anti-Rabbit IgG at 1/20000 dilution Predicted band size: 24-27 kD Observed band size: 24 kD



Paraformaldehyde-fixed, paraffin embedded (rat heart); Antigen retrieval by boiling in sodium citrate buffer (pH6.0) for 15min; Block endogenous peroxidase by 3% hydrogen peroxide for 20 minutes; Blocking buffer (normal goat serum) at 37°C for 30min; Antibody incubation with (Rab3A+Rab3B+Rab3C+Rab3D) Polyclonal Antibody, Unconjugated (bs-6180R) at 1:400 overnight at 4°C, followed by a conjugated secondary (sp-0023) for 20 minutes and DAB staining.