

bsm-51091M**[Primary Antibody]****HLA-DRA Mouse mAb****Bioss**
ANTIBODIES

www.bioss.com.cn

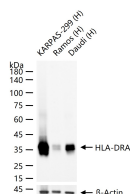
sales@bioss.com.cn

techsupport@bioss.com.cn

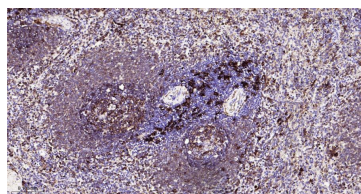
400-901-9800

— DATASHEET —**Host:** Mouse**Clonality:** Monoclonal**CloneNo.:** 1E12**GeneID:** 3122**SWISS:** P01903**Target:** HLA-DRA**Purification:** affinity purified by Protein A**Concentration:** 1mg/ml**Storage:** Shipped at 4°C. Store at -20°C for one year. Avoid repeated freeze/thaw cycles.

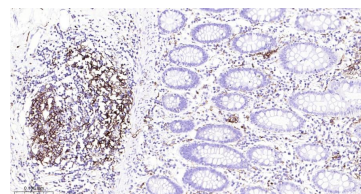
Background: HLA-DRA is one of the HLA class II alpha chain paralogues. This class II molecule is a heterodimer consisting of an alpha and a beta chain, both anchored in the membrane. It plays a central role in the immune system by presenting peptides derived from extracellular proteins. Class II molecules are expressed in antigen presenting cells (APC: B lymphocytes, dendritic cells, macrophages). The alpha chain is approximately 33-35 kDa and its gene contains 5 exons. Exon 1 encodes the leader peptide, exons 2 and 3 encode the two extracellular domains, and exon 4 encodes the transmembrane domain and the cytoplasmic tail. DRA does not have polymorphisms in the peptide binding part and acts as the sole alpha chain for DRB1, DRB3, DRB4 and DRB5. [provided by RefSeq]

Applications: **WB** (1:500-2000)**IHC-P** (1:50-200)**IHC-F** (1:50-200)**Reactivity:** Human**Predicted MW.:** 26 kDa**Subcellular Location:** Cell membrane ,Cytoplasm**— VALIDATION IMAGES —**

25 ug total protein per lane of various lysates (see on figure) probed with HLA-DRA monoclonal antibody, unconjugated (bsm-51091M) at 1:1000 dilution and 4°C overnight incubation. Followed by conjugated secondary antibody incubation at r.t. for 60 min.



Paraformaldehyde-fixed, paraffin embedded Human Spleen; Antigen retrieval by boiling in sodium citrate buffer (pH6.0) for 15 min; Antibody incubation with HLA-DRA Monoclonal Antibody, Unconjugated(bsm-51091M) at 1:100 overnight at 4°C, followed by conjugation to the bs-40296G-HRP and DAB (C-0010) staining.



Paraformaldehyde-fixed, paraffin embedded Human Colon; Antigen retrieval by boiling in sodium citrate buffer (pH6.0) for 15 min; Antibody incubation with HLA-DRA Monoclonal Antibody, Unconjugated(bsm-51091M) at 1:100 overnight at 4°C, followed by conjugation to the bs-40296G-HRP and DAB (C-0010) staining.