

bs-6148R**[Primary Antibody]****Bioss**
ANTIBODIES

www.bioss.com.cn

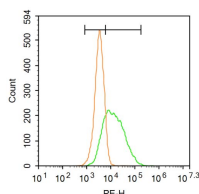
sales@bioss.com.cn

techsupport@bioss.com.cn

400-901-9800

Frizzled 1/Wnt receptor Rabbit pAb**— DATASHEET —**

Host: Rabbit	Isotype: IgG	Applications: Flow-Cyt (3ug/test)
Clonality: Polyclonal		Reactivity: Human, Rat (predicted: Mouse, Pig, Cow, Chicken, Dog, Horse)
GeneID: 8321	SWISS: Q9UP38	Predicted MW.: 63/71 kDa
Target: Frizzled 1/Wnt receptor		Subcellular Location: Cell membrane
Immunogen: KLH conjugated synthetic peptide derived from human Frizzled 1: 501-600/647.		
Purification: affinity purified by Protein A		
Concentration: 1mg/ml		
Storage: 0.01M TBS (pH7.4) with 1% BSA, 0.02% Proclin300 and 50% Glycerol. Shipped at 4°C. Store at -20°C for one year. Avoid repeated freeze/thaw cycles.		
Background: Receptor for Wnt proteins. Most of frizzled receptors are coupled to the beta catenin canonical signaling pathway, which leads to the activation of disheveled proteins, inhibition of GSK3 kinase, nuclear accumulation of beta catenin and activation of Wnt target genes. A second signaling pathway involving PKC and calcium fluxes has been seen for some family members, but it is not yet clear if it represents a distinct pathway or if it can be integrated in the canonical pathway, as PKC seems to be required for Wnt mediated inactivation of GSK3 kinase. Both pathways seem to involve interactions with G proteins. May be involved in transduction and intercellular transmission of polarity information during tissue morphogenesis and/or in differentiated tissues. Activated by Wnt3A, Wnt3, Wnt1 and to a lesser extent Wnt2, but not by Wnt4, Wnt5A, Wnt5B, Wnt6, Wnt7A or Wnt7B.		

— VALIDATION IMAGES —

Blank control: A549. Primary Antibody (green line): Rabbit Anti-Frizzled 1 antibody (bs-6148R)
Dilution: 3µg /10⁶ cells; Isotype Control Antibody (orange line): Rabbit IgG. Secondary Antibody : Goat anti-rabbit IgG-PE Dilution: 3µg /test. Protocol The cells were incubated in 5%BSA to block non-specific protein-protein interactions for 30 min at room temperature .Cells stained with Primary Antibody for 30 min at room temperature. The secondary antibody used for 40 min at room temperature. Acquisition of 20,000 events was performed.