

bs-18581R**[Primary Antibody]****phospho-LYRIC (Ser568) Rabbit pAb****Bioss**
ANTIBODIES

www.bioss.com.cn

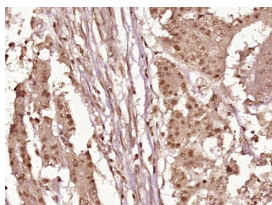
sales@bioss.com.cn

techsupport@bioss.com.cn

400-901-9800

— DATASHEET —

| | | |
|--|----------------------|---|
| Host: Rabbit | Isotype: IgG | Applications: IHC-P (1:100-500) |
| Clonality: Polyclonal | | IHC-F (1:100-500) |
| GeneID: 92140 | SWISS: Q86UE4 | IF (1:100-500) |
| Target: LYRIC (Ser568) | | Reactivity: Human (predicted: Mouse, Rat, Pig, Cow, Horse) |
| Immunogen: KLH conjugated synthesised phosphopeptide derived from human LYRIC around the phosphorylation site of Ser568: WE(p-S)PK. | | |
| Purification: affinity purified by Protein A | | Predicted MW.: 64 kDa |
| Concentration: 1mg/ml | | Subcellular Location: Cell membrane ,Cytoplasm ,Nucleus |
| Storage: 0.01M TBS (pH7.4) with 1% BSA, 0.02% Proclin300 and 50% Glycerol. Shipped at 4°C. Store at -20°C for one year. Avoid repeated freeze/thaw cycles. | | |
| Background: LYRIC is a type II membrane protein, the precise role of which has yet to be defined. It is expressed in breast and prostate carcinoma and is a potential mediator of lung metastasis. It has also been found in mouse Purkinje neurons and cerebellum. In epithelial cells it is recruited to tight junctions (TJ) during the maturation of the TJ complexes. LYRIC co-localizes with beta-catenin in normal and tumour tissues. | | |

— VALIDATION IMAGES —

Paraformaldehyde-fixed, paraffin embedded (Human stomach cancer); Antigen retrieval by boiling in sodium citrate buffer (pH6.0) for 15min; Block endogenous peroxidase by 3% hydrogen peroxide for 20 minutes; Blocking buffer (normal goat serum) at 37°C for 30min; Antibody incubation with (phospho-LYRIC (Ser568)) Polyclonal Antibody, Unconjugated (bs-18581R) at 1:400 overnight at 4°C, followed by operating according to SP Kit(Rabbit) (sp-0023) instructions and DAB staining.