

bs-12852R

[Primary Antibody]

SYBL1 Rabbit pAb

Bioss
ANTIBODIES

www.bioss.com.cn

sales@bioss.com.cn

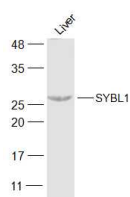
techsupport@bioss.com.cn

400-901-9800

— DATASHEET —

Host: Rabbit	Isotype: IgG	Applications: WB (1:500-2000)
Clonality: Polyclonal		Reactivity: Mouse (predicted: Human, Rat, Rabbit, Pig, Sheep, Cow, Zebrafish, Chicken, Horse)
GeneID: 6845	SWISS: P51809	Predicted MW.: 25 kDa
Target: SYBL1		Subcellular Location: Cytoplasm
Immunogen: KLH conjugated synthetic peptide derived from human SYBL1: 1-100/220.		
Purification: affinity purified by Protein A		
Concentration: 1mg/ml		
Storage: 0.01M TBS (pH7.4) with 1% BSA, 0.02% Proclin300 and 50% Glycerol. Shipped at 4°C. Store at -20°C for one year. Avoid repeated freeze/thaw cycles.		
Background: FLJ53045; FLJ53762; FLJ54296; HGNC:11486; OTTHUMP00000024258; OTTHUMP00000024259; OTTHUMP000000225953; SYBL 1; SYBL1; Synaptobrevin like 1; Synaptobrevin-like protein 1; Tetanus insensitive VAMP; Tetanus neurotoxin insensitive VAMP; Tetanus-insensitive VAMP; TI VAMP; Ti-VAMP; TIVAMP; VAMP-7; VAMP7; VAMP7_HUMAN		

— VALIDATION IMAGES —



Sample: Liver (Mouse) Lysate at 40 ug Primary:
Anti-SYBL1 (bs-12852R) at 1/300 dilution
Secondary: IRDye800CW Goat Anti-Rabbit IgG at
1/20000 dilution Predicted band size: 25 kD
Observed band size: 26 kD