

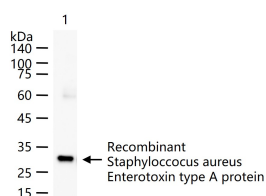
bsm-42352M**[Primary Antibody]****Staphylococcus Enterotoxin A Mouse mAb****BioSS**
ANTIBODIES

www.bioss.com.cn

sales@bioss.com.cn

techsupport@bioss.com.cn

400-901-9800

— DATASHEET —**Host:** Mouse**Isotype:** IgG**Clonality:** Monoclonal**CloneNo.:** 4A7**Target:** Staphylococcus Enterotoxin A**Purification:** affinity purified by Protein A**Storage:** 0.01M TBS (pH7.4) with 1% BSA, 0.02% Proclin300 and 50% Glycerol.
Shipped at 4°C. Store at -20°C for one year. Avoid repeated freeze/thaw cycles.**Applications:** WB (1:500-2000)**Reactivity:** Staphylococcus
aureus**Predicted MW.:** 30 kDa**— VALIDATION IMAGES —**

20 ng Recombinant Staphylococcus aureus Enterotoxin type A protein, N-His (bs-42352P) per lane probed with Staphylococcus Enterotoxin A monoclonal antibody respectively, unconjugated (bsm-42352M) at 1:1000 dilution and 4°C overnight incubation. Followed by corresponding conjugated secondary antibody incubation at r.t. for 60 min.