

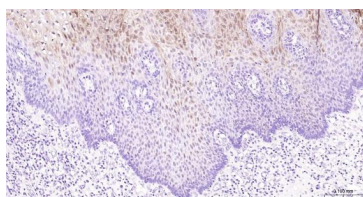
bsm-43190M**[Primary Antibody]****SERPINB3 Mouse mAb****BioSS**
ANTIBODIES

www.bioss.com.cn

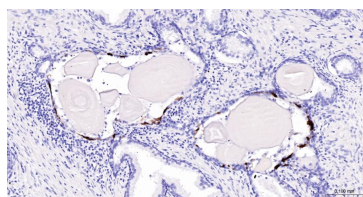
sales@bioss.com.cn

techsupport@bioss.com.cn

400-901-9800

DATASHEET**Host:** Mouse**Isotype:** IgG**Clonality:** Monoclonal**CloneNo.:** 8C9**GeneID:** 6317**SWISS:** P29508**Target:** SERPINB3**Immunogen:** Recombinant human SERPINB3 protein: 1-390/390.**Purification:** affinity purified by Protein A**Storage:** 0.01M TBS (pH7.4) with 1% BSA, 0.02% Proclin300 and 50% Glycerol.
Shipped at 4°C. Store at -20°C for one year. Avoid repeated freeze/thaw cycles.**Background:** Enables cysteine-type endopeptidase inhibitor activity; protease binding activity; and virus receptor activity. Involved in several processes, including autocrine signaling; paracrine signaling; and regulation of cellular protein metabolic process. Located in cytoplasmic vesicle; extracellular exosome; and nucleus. [provided by Alliance of Genome Resources, Apr 2022]**Applications:** **IHC-P** (1: 100-500)**IHC-F** (1: 100-500)**IF** (1: 100-500)**Reactivity:** Human**Predicted
MW.:** 45 kDa**Subcellular
Location:** Secreted ,Cytoplasm**VALIDATION IMAGES**

Paraformaldehyde-fixed, paraffin embedded Human Esophagus; Antigen retrieval by boiling in sodium citrate buffer (pH6.0) for 15 min; Antibody incubation with SERPINB3 Monoclonal Antibody, Unconjugated(bsm-43190M) at 1:200 overnight at 4°C, followed by conjugation to the bs-40296G-HRP and DAB (C-0010) staining.



Paraformaldehyde-fixed, paraffin embedded Human Prostate; Antigen retrieval by boiling in sodium citrate buffer (pH6.0) for 15 min; Antibody incubation with SERPINB3 Monoclonal Antibody, Unconjugated(bsm-43190M) at 1:200 overnight at 4°C, followed by conjugation to the bs-40296G-HRP and DAB (C-0010) staining.