

bs-25815R**[Primary Antibody]****BRCA2 Rabbit pAb****Bioss**
ANTIBODIES

www.bioss.com.cn

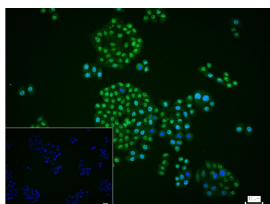
sales@bioss.com.cn

techsupport@bioss.com.cn

400-901-9800

— DATASHEET —

Host: Rabbit	Isotype: IgG	Applications: ICC/IF (1:200)
Clonality: Polyclonal		Reactivity: Human
GeneID: 675	SWISS: P51587	
Target: BRCA2		
Immunogen: KLH conjugated synthetic peptide derived from human BRCA2: 61-160/3418.		Predicted MW.: 384 kDa
Purification: affinity purified by Protein A		Subcellular Location: Nucleus
Concentration: 1mg/ml		
Storage: 0.01M TBS (pH7.4) with 1% BSA, 0.02% Proclin300 and 50% Glycerol. Shipped at 4°C. Store at -20°C for one year. Avoid repeated freeze/thaw cycles.		
Background: Inherited mutations in BRCA1 and this gene, BRCA2, confer increased lifetime risk of developing breast or ovarian cancer. Both BRCA1 and BRCA2 are involved in maintenance of genome stability, specifically the homologous recombination pathway for double-strand DNA repair. The largest exon in both genes is exon 11, which harbors the most important and frequent mutations in breast cancer patients. The BRCA2 gene was found on chromosome 13q12.3 in human. The BRCA2 protein contains several copies of a 70 aa motif called the BRC motif, and these motifs mediate binding to the RAD51 recombinase which functions in DNA repair. BRCA2 is considered a tumor suppressor gene, as tumors with BRCA2 mutations generally exhibit loss of heterozygosity (LOH) of the wild-type allele. [provided by RefSeq, May 2020]		

— VALIDATION IMAGES —

4% Paraformaldehyde-fixed MCF-7 (H) cell;
Triton X-100 at r.t. for 20 min; Antibody
incubation with (BRCA2) polyclonal Antibody,
unconjugated (bs-25815R) 1:100, 90 min at 37°C;
followed by conjugated Goat Anti-Rabbit IgG
antibody (green, bs-40295G-FITC) at 37°C for 90
min, DAPI (blue, C02-04002) was used to stain
the cell nuclei. PBS instead of the primary
antibody was used as the blank control.