

bs-25810R**[Primary Antibody]****GLP-1R Rabbit pAb****Bioss**
ANTIBODIES

www.bioss.com.cn

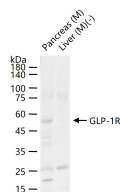
sales@bioss.com.cn

techsupport@bioss.com.cn

400-901-9800

— DATASHEET —

Host: Rabbit	Isotype: IgG	Applications: WB (1:500-2000)
Clonality: Polyclonal		Reactivity: Mouse (predicted: Human, Rat)
GeneID: 2740	SWISS: P43220	
Target: GLP-1R		Predicted MW.: 51 kDa
Immunogen: KLH conjugated synthetic peptide derived from rat GLP-1R: 171-270/463.		Subcellular Location: Cell membrane ,Cytoplasm
Purification: affinity purified by Protein A		
Concentration: 1mg/ml		
Storage: 0.01M TBS (pH7.4) with 1% BSA, 0.02% Proclin300 and 50% Glycerol. Shipped at 4°C. Store at -20°C for one year. Avoid repeated freeze/thaw cycles.		
Background: GLP1R is a receptor for glucagon-like peptide 1. The activity of this receptor is mediated by G proteins which activate adenylyl cyclase.It has been suggested that this protein influences the feelings of satiety or hunger, sensation of glucose levels, control of glucagon sensitivity of islets, and non insulin-dependent diabetes mellitus. GLP1R is believed to be expressed in human pancreas,lung, brain, stomach, kidney and heart. ESTs have been isolated from skin and kidney libraries.		

— VALIDATION IMAGES —

25 ug total protein per lane of various lysates (see on figure) probed with GLP-1R polyclonal antibody, unconjugated (bs-25810R) at 1:1000 dilution and 4°C overnight incubation. Followed by conjugated secondary antibody incubation at r.t. for 60 min.