

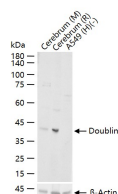
bsm-63046R**[Primary Antibody]****Doublin Recombinant Rabbit mAb****BioSS**
ANTIBODIES

www.bioss.com.cn

sales@bioss.com.cn

techsupport@bioss.com.cn

400-901-9800

— DATASHEET —**Host:** Rabbit**Isotype:** IgG**Clonality:** Recombinant**CloneNo.:** 5H2**GeneID:** 1641**SWISS:** O43602**Target:** Doublin**Immunogen:** A synthesized peptide derived from human Doublin: 22-70/365.**Purification:** affinity purified by Protein A**Storage:** 10mM phosphate buffered saline , pH 7.4, 150mM sodium chloride, 0.05% BSA, 0.02% Proclin300 and 50% glycerol.
Shipped at 4°C. Store at -20°C for one year. Avoid repeated freeze/thaw cycles.**Background:** Doublecortin (DCX) is a microtubule-associated protein expressed almost exclusively in immature neurons. Neuronal precursors begin to express DCX shortly after exiting the cell cycle, and continue to express DCX for 2-3 weeks as the cells mature into neurons. Downregulation of DCX begins after 2 weeks, and occurs at the same time that these cells begin to express, a marker for mature neurons. Due to the nearly exclusive expression of DCX in developing neurons, this protein has been used increasingly as a marker for neurogenesis. Indeed, the levels of DCX expression increase in response to exercise, which occurs in parallel with increased BrdU labelling, currently a "gold standard" in measuring neurogenesis.**Applications:** WB (1:500-2000)**Reactivity:** Mouse, Rat
(predicted: Human)**Predicted
MW.:** 41 kDa**Subcellular
Location:** Cytoplasm**— VALIDATION IMAGES —**

25 ug total protein per lane of various lysates (see on figure) probed with Doublin monoclonal antibody, unconjugated (bsm-63046R) at 1:1000 dilution and 4°C overnight incubation. Followed by conjugated secondary antibody incubation at r.t. for 60 min.