

bs-12838R**[Primary Antibody]**

SUCLA2/Renal carcinoma antigen NYREN39 Rabbit pAb

BioSS
ANTIBODIES

www.bioss.com.cn

sales@bioss.com.cn

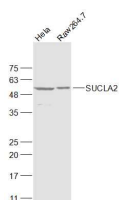
techsupport@bioss.com.cn

400-901-9800

— DATASHEET —

Host: Rabbit	Isotype: IgG	Applications: WB (1:500-2000)
Clonality: Polyclonal		Reactivity: Human, Mouse (predicted: Rat, Rabbit, Pig, Cow, Chicken, Dog, Horse, Chimpanzee)
GeneID: 8803	SWISS: Q9P2R7	Predicted MW.: 45 kDa
Target: SUCLA2/Renal carcinoma antigen NYREN39		Subcellular Location: Cytoplasm
Immunogen: KLH conjugated synthetic peptide derived from human SUCLA2: 221-320/463.		
Purification: affinity purified by Protein A		
Concentration: 1mg/ml		
Storage: 0.01M TBS (pH7.4) with 1% BSA, 0.02% Proclin300 and 50% Glycerol. Shipped at 4°C. Store at -20°C for one year. Avoid repeated freeze/thaw cycles.		
Background: Succinyl-CoA synthetase (SCS) is a mitochondrial matrix enzyme that acts as a heterodimer, being composed of an invariant alpha subunit and a substrate-specific beta subunit. The protein encoded by this gene is an ATP-specific SCS beta subunit that dimerizes with the SCS alpha subunit to form SCS-A, an essential component of the tricarboxylic acid cycle. SCS-A hydrolyzes ATP to convert succinate to succinyl-CoA. Defects in this gene are a cause of myopathic mitochondrial DNA depletion syndrome. A pseudogene of this gene has been found on chromosome 6. [provided by RefSeq, Jul 2008]		

— VALIDATION IMAGES —



Sample: Hela(Human) Cell Lysate at 30 ug
Raw264.7(Mouse) Cell Lysate at 30 ug Primary:
Anti-SUCLA2 (bs-12838R) at 1/1000 dilution
Secondary: IRDye800CW Goat Anti-Rabbit IgG at
1/20000 dilution Predicted band size: 45 kD
Observed band size: 53 kD