

bs-12837R**[Primary Antibody]****STXBP2 Rabbit pAb****BioSS**
ANTIBODIES

www.bioss.com.cn

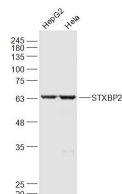
sales@bioss.com.cn

techsupport@bioss.com.cn

400-901-9800

— DATASHEET —

Host: Rabbit	Isotype: IgG	Applications: WB (1:500-2000)
Clonality: Polyclonal		
GeneID: 6813	SWISS: Q15833	
Target: STXBP2		
Immunogen: KLH conjugated synthetic peptide derived from human STXBP2: 161-260/593.		
Purification: affinity purified by Protein A		Reactivity: Human (predicted: Mouse, Rat, Pig, Horse)
Concentration: 1mg/ml		Predicted MW.: 66 kDa
Storage: 0.01M TBS (pH7.4) with 1% BSA, 0.02% Proclin300 and 50% Glycerol. Shipped at 4°C. Store at -20°C for one year. Avoid repeated freeze/thaw cycles.		Subcellular Location: Cell membrane
Background: This gene encodes a member of the STXBP/unc-18/SEC1 family. The encoded protein is involved in intracellular trafficking, control of SNARE (soluble NSF attachment protein receptor) complex assembly, and the release of cytotoxic granules by natural killer cells. Mutations in this gene are associated with familial hemophagocytic lymphohistiocytosis. Alternatively spliced transcript variants encoding different isoforms have been noted for this gene. [provided by RefSeq, Jan 2013]		

— VALIDATION IMAGES —

Sample: HepG2(Human) Cell Lysate at 30 ug
Hela(Human) Cell Lysate at 30 ug Primary: Anti-STXBP2 (bs-12837R) at 1/1000 dilution
Secondary: IRDye800CW Goat Anti-Rabbit IgG at 1/20000 dilution Predicted band size: 66 kD
Observed band size: 66 kD