

**bs-12836R**

**[ Primary Antibody ]**

## STT3A Rabbit pAb

**Bioss**  
ANTIBODIES

www.bioss.com.cn

sales@bioss.com.cn

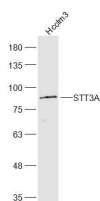
techsupport@bioss.com.cn

400-901-9800

### — DATASHEET —

<b>Host:</b> Rabbit	<b>Isotype:</b> IgG	<b>Applications:</b> WB (1:500-2000)
<b>Clonality:</b> Polyclonal		<b>Reactivity:</b> Human (predicted: Mouse, Rat, Rabbit, Cow, Horse, Danio)
<b>GeneID:</b> 3703	<b>SWISS:</b> P46977	
<b>Target:</b> STT3A		<b>Predicted MW.:</b> 81 kDa
<b>Immunogen:</b> KLH conjugated synthetic peptide derived from human STT3A: 601-705/705.		<b>Subcellular Location:</b> Cell membrane
<b>Purification:</b> affinity purified by Protein A		
<b>Concentration:</b> 1mg/ml		
<b>Storage:</b> 0.01M TBS (pH7.4) with 1% BSA, 0.02% Proclin300 and 50% Glycerol. Shipped at 4°C. Store at -20°C for one year. Avoid repeated freeze/thaw cycles.		

### — VALIDATION IMAGES —



Sample: Hcclm3(Human) Cell Lysate at 30 ug  
Primary: Anti-STT3A (bs-12836R) at 1/300  
dilution Secondary: IRDye800CW Goat Anti-  
Rabbit IgG at 1/20000 dilution Predicted band  
size: 81 kD Observed band size: 81 kD