

Recombinant human Calreticulin protein, C-His

Catalog Number: bs-42453P

Concentration: >1mg/ml

Species: Human

AA Seq: 18-417/417

Predicted MW: 48.5 kDa

Tags: C-His

Endotoxin: Not analyzed

Purity: >90% as determined by SDS-PAGE

Purification: AC

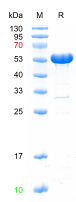
Form: Liquid

Storage: 20mM Tris-HCl (pH=8.0) with 150mM NaCl

Stored at -70°C or -20°C. Avoid repeated freeze/thaw cycles.

Background: Calreticulin is a highly conserved chaperone protein which resides primarily in the endoplasmic reticulum, and is involved in a variety of cellular processes, among them, cell adhesion. Additionally, it functions in protein folding quality control and calcium homeostasis. Calreticulin is also found in the nucleus, suggesting that it may have a role in transcription regulation. Systemic lupus erythematosus is associated with increased autoantibody titers against calreticulin. Recurrent mutations in calreticulin have been linked to various neoplasms, including the myeloproliferative type.[provided by RefSeq, May 2020]

VALIDATION IMAGES



The purity of the protein is greater than 90% as determined by reducing SDS-PAGE.