

---

## MADCAM1 Rabbit pAb

Catalog Number: bs-42393R

Target Protein: MADCAM1

Concentration: 1mg/ml

Form: Liquid

Host: Rabbit

Clonality: Polyclonal

Isotype: IgG

Applications: WB (1:500-2000)

Reactivity: Mouse, Rat

Predicted MW: 38 kDa

Entrez Gene: 17123

Swiss Prot: Q61826

Source: Recombinant mouse MADCAM1 protein: 22-364/405.

Purification: affinity purified by Protein A

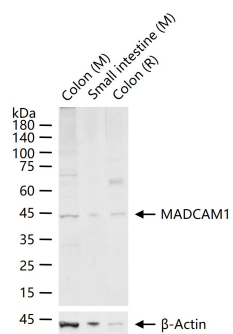
Storage: 0.01M TBS (pH7.4) with 1% BSA, 0.02% Proclin300 and 50% Glycerol.

Shipped at 4°C. Store at -20°C for one year. Avoid repeated freeze/thaw cycles.

**Background:** The recirculation of lymphocytes through different organs is thought to be regulated by adhesion molecules recognizing tissue-specific vascular addressins on the endothelium. The mucosal vascular addressin, MadCAM-1 (mucosal addressin cell adhesion molecule 1), is an immunoglobulin superfamily adhesion molecule for lymphocytes that is expressed by mucosal venules and helps direct lymphocyte traffic into Peyer's patches and the intestinal lamina propria. MadCAM-1 acts as an endothelial cell ligand for leukocyte homing receptors L-Selectin and Integrin Alpha 4/Beta 7. MadCAM-1 is strongly expressed on inflamed portal vein/sinusoidal endothelium in autoimmune-mediated liver disease and plays a major contributory role in the progression of chronic experimental autoimmune encephalomyelitis.

### VALIDATION IMAGES

---



25 ug total protein per lane of various lysates (see on figure) probed with MADCAM1 polyclonal antibody, unconjugated (bs-42393R) at 1:1000 dilution and 4°C overnight incubation. Followed by conjugated secondary antibody incubation at r.t. for 60 min.