

bs-12834R**[Primary Antibody]****STK35 Rabbit pAb****BioSS**
ANTIBODIES

www.bioss.com.cn

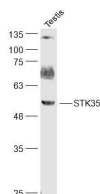
sales@bioss.com.cn

techsupport@bioss.com.cn

400-901-9800

— DATASHEET —

Host: Rabbit	Isotype: IgG	Applications: WB (1:500-2000)
Clonality: Polyclonal		Reactivity: Rat (predicted: Human, Mouse, Pig)
GeneID: 140901	SWISS: Q8TDR2	
Target: STK35		Predicted MW.: 58 kDa
Immunogen: KLH conjugated synthetic peptide derived from human STK35: 351-450/534.		Subcellular Location: Cytoplasm ,Nucleus
Purification: affinity purified by Protein A		
Concentration: 1mg/ml		
Storage: 0.01M TBS (pH7.4) with 1% BSA, 0.02% Proclin300 and 50% Glycerol. Shipped at 4°C. Store at -20°C for one year. Avoid repeated freeze/thaw cycles.		
Background: The protein encoded by this gene is a kinase that is predominantly found in the nucleus. However, it can interact with PDLIM1/CLP-36 in the cytoplasm and localize to actin stress fibers. The encoded protein may be a regulator of actin stress fibers in nonmuscle cells. [provided by RefSeq, Jul 2008]		

— VALIDATION IMAGES —

Sample: Testis(Rat) Cell Lysate at 40 ug Primary:
Anti-STK35 (bs-12834R) at 1/300 dilution
Secondary: IRDye800CW Goat Anti-Rabbit IgG at
1/20000 dilution Predicted band size: 58 kD
Observed band size: 58 kD