

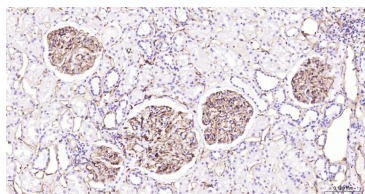
**bsm-43666M****[ Primary Antibody ]****CD31 Mouse mAb****BioSS**  
**ANTIBODIES**

www.bioss.com.cn

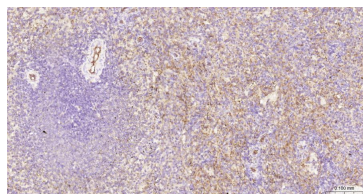
sales@bioss.com.cn

techsupport@bioss.com.cn

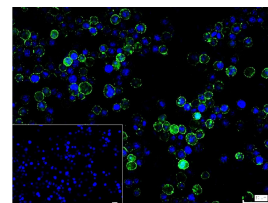
400-901-9800

**— DATASHEET —****Host:** Mouse**Clonality:** Monoclonal**GeneID:** 5175**Target:** CD31**Purification:** affinity purified by Protein A**Concentration:** 1mg/ml**Storage:** 0.01M TBS (pH7.4) with 1% BSA, 0.02% Proclin300 and 50% Glycerol.  
Shipped at 4°C. Store at -20°C for one year. Avoid repeated freeze/thaw cycles.**Background:** The protein encoded by this gene is found on the surface of platelets, monocytes, neutrophils, and some types of T-cells, and makes up a large portion of endothelial cell intercellular junctions. The encoded protein is a member of the immunoglobulin superfamily and is likely involved in leukocyte migration, angiogenesis, and integrin activation. [provided by RefSeq, May 2010]**Isotype:** IgG**CloneNo.:** 1F8**SWISS:** P16284**Applications:** IHC-P (1:100-500)**IHC-F** (1:100-500)**IF** (1:100-500)**Flow-Cyt** (1ug/Test)**ICC/IF** (1:50-200)**Reactivity:** Human**Predicted**  
**MW.:** 78 kDa**Subcellular** Membrane, Cell junction  
**Location:** , Cell membrane**— VALIDATION IMAGES —**

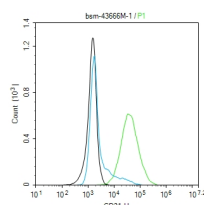
Paraformaldehyde-fixed, paraffin embedded Human Kidney; Antigen retrieval by boiling in sodium citrate buffer (pH6.0) for 15 min; The section was incubated with CD31 Monoclonal Antibody, Unconjugated (bsm-43666M) at 1:200 overnight at 4°C, followed by conjugation to the bs-40296G-HRP and DAB (C-0010) staining.



Paraformaldehyde-fixed, paraffin embedded Human Spleen; Antigen retrieval by boiling in sodium citrate buffer (pH6.0) for 15 min; The section was incubated with CD31 Monoclonal Antibody, Unconjugated (bsm-43666M) at 1:200 overnight at 4°C, followed by conjugation to the bs-40296G-HRP and DAB (C-0010) staining.



4% Paraformaldehyde-fixed Jurkat (H) cell; Antibody incubation with (CD31) monoclonal Antibody, unconjugated (bsm-43666M) 1:100, 90 min at 37°C; followed by conjugated Goat Anti-Mouse IgG antibody (green, bs-60296G-BF488) at 37°C for 90 min, DAPI (blue, C02-04002) was used to stain the cell nuclei. PBS instead of the primary antibody was used as the blank control.

The EA.hy926(H) cells were incubated in 5%BSA to block non-specific protein-protein interactions (30 min at r.t.). Primary Antibody (green): Mouse Anti-CD31 antibody (bsm-43666M): 1 µg/10<sup>6</sup> cells; Secondary Antibody (white blue): Goat anti-Mouse IgG-BF488(bs-60296G-BF488): 1 µg/test. Blank control (black): PBS. Acquisition of 20,000 events was performed.