

bsm-54107R**[Primary Antibody]****BioSS**
ANTIBODIES

www.bioss.com.cn

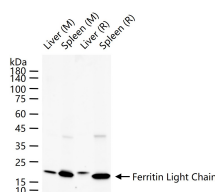
sales@bioss.com.cn

techsupport@bioss.com.cn

400-901-9800

Ferritin Light Chain Recombinant Rabbit mAb**— DATASHEET —**

Host: Rabbit	Isotype: IgG	Applications: WB (1:500-2000) Flow-Cyt (1:20-100) IP (1:20-50) Reactivity: Mouse, Rat (predicted: Human) Predicted MW.: 20 kDa Subcellular Location: Secreted ,Extracellular matrix ,Cytoplasm
Clonality: Recombinant	CloneNo.: 1C8	
GeneID: 2512	SWISS: P02792	
Target: Ferritin Light Chain		
Immunogen: A synthesized peptide derived from human Ferritin light chain: 135-175.		
Purification: affinity purified by Protein A		
Concentration: 1mg/ml		
Storage: 0.01M TBS (pH7.4) with 1% BSA, 0.02% Proclin300 and 50% Glycerol. Shipped at 4°C. Store at -20°C for one year. Avoid repeated freeze/thaw cycles.		
Background: This gene encodes the light subunit of the ferritin protein. Ferritin is the major intracellular iron storage protein in prokaryotes and eukaryotes. It is composed of 24 subunits of the heavy and light ferritin chains. Variation in ferritin subunit composition may affect the rates of iron uptake and release in different tissues. A major function of ferritin is the storage of iron in a soluble and nontoxic state. Defects in this light chain ferritin gene are associated with several neurodegenerative diseases and hyperferritinemia-cataract syndrome. This gene has multiple pseudogenes. [provided by RefSeq, Jul 2008].		

— VALIDATION IMAGES —

25 ug total protein per lane of various lysates (see on figure) probed with Ferritin Light Chain monoclonal antibody, unconjugated (bsm-54107R) at 1:2000 dilution and 4°C overnight incubation. Followed by conjugated secondary antibody incubation at r.t. for 60 min.