

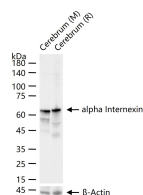
**bsm-54173R****[ Primary Antibody ]****alpha Internexin Recombinant Rabbit mAb****BioSS**  
**ANTIBODIES**

www.bioss.com.cn

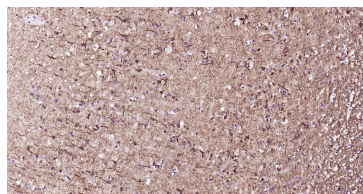
sales@bioss.com.cn

techsupport@bioss.com.cn

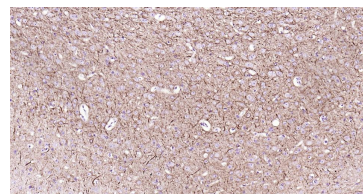
400-901-9800

**— DATASHEET —****Host:** Rabbit**Isotype:** IgG**Clonality:** Recombinant**CloneNo.:** 1C7**GeneID:** 9118**SWISS:** Q16352**Target:** alpha Internexin**Immunogen:** A synthesized peptide derived from human alpha Internexin: 400-499/499.**Purification:** affinity purified by Protein A**Concentration:** 1mg/ml**Storage:** 10mM phosphate buffered saline , pH 7.4, 150mM sodium chloride, 0.05% BSA, 0.02% Proclin300 and 50% glycerol. Shipped at 4°C. Store at -20°C for one year. Avoid repeated freeze/thaw cycles.**Background:** neurofilaments are type IV intermediate filament heteropolymers composed of light, medium, and heavy chains. Neurofilaments comprise the axoskeleton and they functionally maintain the neuronal caliber. They may also play a role in intracellular transport to axons and dendrites. This gene is a member of the intermediate filament family and is involved in the morphogenesis of neurons. [provided by RefSeq, Jun 2009]**Applications:** WB (1:500-2000)**IHC-P** (1:100-500)**IHC-F** (1:100-500)**IF** (1:100-500)**Flow-Cyt** (1:20-100)**ICC/IF** (1:50-200)**Reactivity:** Human, Mouse, Rat**Predicted MW.:** 55 kDa**Subcellular Location:** Cytoplasm**— VALIDATION IMAGES —**

25 ug total protein per lane of various lysates (see on figure) probed with alpha Internexin monoclonal antibody, unconjugated (bsm-54173R) at 1:1000 dilution and 4°C overnight incubation. Followed by conjugated secondary antibody incubation at r.t. for 60 min.



Paraformaldehyde-fixed, paraffin embedded Human Cerebra; Antigen retrieval by boiling in sodium citrate buffer (pH6.0) for 15 min; Antibody incubation alpha Internexin Monoclonal Antibody, Unconjugated(bsm-54173R) at 1:200 overnight at 4°C, followed by conjugation to the bs-0295G-HRP and DAB (C-0010) staining.



Paraformaldehyde-fixed, paraffin embedded Mouse Cerebra; Antigen retrieval by boiling in sodium citrate buffer (pH6.0) for 15 min; Antibody incubation alpha Internexin Monoclonal Antibody, Unconjugated(bsm-54173R) at 1:200 overnight at 4°C, followed by conjugation to the bs-0295G-HRP and DAB (C-0010) staining.