

bs-0158R**[Primary Antibody]****BioSS**
ANTIBODIES

www.bioss.com.cn

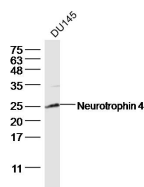
sales@bioss.com.cn

techsupport@bioss.com.cn

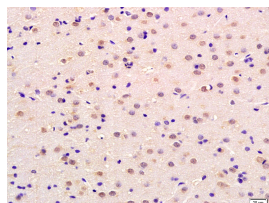
400-901-9800

Neurotrophin 4 Rabbit pAb**— DATASHEET —**

| | | |
|--|----------------------|---|
| Host: Rabbit | Isotype: IgG | Applications: WB (1:500-2000) |
| Clonality: Polyclonal | | IHC-P (1:100-500) |
| GeneID: 4909 | SWISS: P34130 | IHC-F (1:100-500) |
| Target: Neurotrophin 4 | | IF (1:100-500) |
| Immunogen: KLH conjugated synthetic peptide derived from human NT-4: 121-210/210. | | Reactivity: Human, Rat (predicted: Mouse) |
| Purification: affinity purified by Protein A | | |
| Concentration: 1mg/ml | | Predicted MW.: 14/27 kDa |
| Storage: 0.01M TBS (pH7.4) with 1% BSA, 0.02% Proclin300 and 50% Glycerol. Shipped at 4°C. Store at -20°C for one year. Avoid repeated freeze/thaw cycles. | | Subcellular Location: Secreted |
| Background: Neurotrophin 4 (NT4; synonymous with NT5) belongs to the NGF beta family and is a survival factor for peripheral sensory sympathetic neurons. The expression of this gene is ubiquitous and less influenced by environmental signals. NT4 levels are highest in the prostate, with lower levels in thymus, placenta, and skeletal muscle. NT4 is also expressed in embryonic and adult tissues. | | |

— VALIDATION IMAGES —

Sample: DU145 Cell (Human) Lysate at 40 ug
 Primary: Anti-Neurotrophin 4 (bs-0158R) at 1/300
 dilution Secondary: IRDye800CW Goat Anti-
 Rabbit IgG at 1/20000 dilution Predicted band
 size: 14/27 kD Observed band size: 26 kD



Tissue/cell: rat brain tissue; 4%
 Paraformaldehyde-fixed and paraffin-
 embedded; Antigen retrieval: citrate buffer (0.01M, pH 6.0), Boiling bathing for 15min; Block
 endogenous peroxidase by 3% Hydrogen
 peroxide for 30min; Blocking buffer (normal goat
 serum, C-0005) at 37°C for 20 min; Incubation:
 Anti-Neurotrophin 4/NT-4/NT-5 Polyclonal
 Antibody, Unconjugated(bs-0158R) 1:200,
 overnight at 4°C, followed by conjugation to the
 secondary antibody(SP-0023) and DAB(C-0010)
 staining