

bsm-0365M-Bio**[Secondary Antibodies]****BioSS**
ANTIBODIES

www.bioss.com.cn

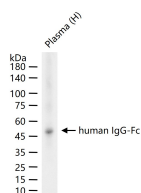
sales@bioss.com.cn

techsupport@bioss.com.cn

400-901-9800

human IgG-Fc, Biotin conjugated**— DATASHEET —**

Host: Mouse	Isotype: IgG1	Applications: WB (1:1000-20000) IHC-P (1:100-1000) IHC-F (1:100-1000) IF (1:100-1000) Flow-Cyt (1:100-1000) ICC/IF (1:100-1000) ELISA (1:1000-20000)
Clonality: Monoclonal		Reactivity: Human
Target: human IgG-Fc		Subcellular Location: Secreted
Purification: affinity purified by Protein A		
Concentration: 1mg/ml		
Storage: 0.01M TBS (pH7.4) with 1% BSA, 0.02% Proclin300 and 50% Glycerol. Shipped at 4°C. Store at -20°C for one year. Avoid repeated freeze/thaw cycles.		
Background: The Fc region is the constant region on an immunoglobulin molecule, the area that is exactly the same on all antibodies. The Fc region is found on the heavy chains and is not involved in binding antigens.		

— VALIDATION IMAGES —

25 ug total protein per lane of various lysates (see on figure) probed with human IgG-Fc monoclonal antibody, unconjugated (bsm-0365M) at 1:1000 dilution and 4°C overnight incubation. Followed by conjugated secondary antibody incubation at r.t. for 60 min.