

**bs-11534R****[ Primary Antibody ]****QRFP Rabbit pAb****Bioss**  
**ANTIBODIES**

www.bioss.com.cn

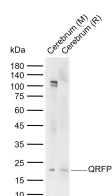
sales@bioss.com.cn

techsupport@bioss.com.cn

400-901-9800

**— DATASHEET —**

<b>Host:</b> Rabbit	<b>Isotype:</b> IgG	<b>Applications:</b> WB (1:500-2000)
<b>Clonality:</b> Polyclonal		<b>Reactivity:</b> Mouse, Rat (predicted: Human, Pig, Sheep, Cow, Horse)
<b>GeneID:</b> 347148	<b>SWISS:</b> P83859	
<b>Target:</b> QRFP		<b>Predicted MW.:</b> 5 kDa
<b>Immunogen:</b> KLH conjugated synthetic peptide derived from human QRFP: 91-133/136.		<b>Subcellular Location:</b> Secreted
<b>Purification:</b> affinity purified by Protein A		
<b>Concentration:</b> 1mg/ml		
<b>Storage:</b> 0.01M TBS (pH7.4) with 1% BSA, 0.02% Proclin300 and 50% Glycerol. Shipped at 4°C. Store at -20°C for one year. Avoid repeated freeze/thaw cycles.		
<b>Background:</b> QRFP is a 136 amino acid secreted protein that is widely expressed in the brain with highest expression levels in the cerebellum, medulla, pituitary, retina, vestibular nucleus and white matter. Also expressed in the bladder, colon, coronary artery, parathyroid gland, prostate, testis and thyroid, QRFP is a member of the RFamide neuropeptide family. QRFP may be involved in aldosterone secretion by the adrenal gland and is also implicated in stimulating metabolic rate, locomotor activity and increasing blood pressure. Considered a ligand for the G-protein coupled receptor GPR103, QRFP may have orexigenic activity, thereby acting as an appetite stimulant. The gene encoding QRFP is located on human chromosome 9, which consists of about 145 million bases, comprises roughly 4% of the human genome and encodes nearly 900 genes.		

**— VALIDATION IMAGES —**

Sample: Lane 1: Mouse Cerebrum tissue lysates

Lane 2: Rat Cerebrum tissue lysates Primary:

Anti-QRFP (bs-11534R) at 1/1000 dilution

Secondary: IRDye800CW Goat Anti-Rabbit IgG at

1/20000 dilution Predicted band size: 5 kDa

Observed band size: 18 kDa