

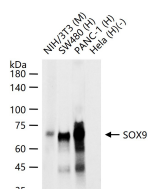
bsm-63031R**[Primary Antibody]****Bioss**
ANTIBODIES

www.bioss.com.cn

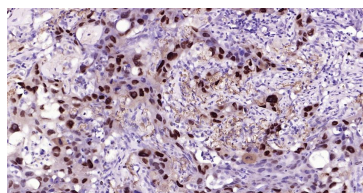
sales@bioss.com.cn

techsupport@bioss.com.cn

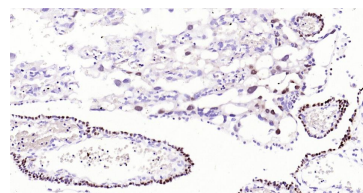
400-901-9800

SOX9 Recombinant Rabbit mAb**— DATASHEET —****Host:** Rabbit**Isotype:** IgG**Clonality:** Recombinant**CloneNo.:** 12H7**GeneID:** 6662**Target:** SOX9**Immunogen:** A synthesized peptide derived from human SOX9: 150-300/509.**Purification:** affinity purified by Protein A**Concentration:** 1mg/ml**Storage:** 0.01M TBS(pH7.4) with 1% BSA, 0.02% Proclin300 and 50% Glycerol.
Shipped at 4°C. Store at -20 °C for one year. Avoid repeated freeze/thaw cycles.**Background:** May be involved in chondrogenesis (cartilage development) during bone formation. Unlikely to play a role in sex determination but may function during testicular and ovarian differentiation (By similarity). Transcriptional activator. Acts early in neural crest formation, functioning redundantly with the other group E Sox factors sox8 and sox10 to induce neural crest progenitors. Induces sox10 expression downstream of wnt-signaling. Principally involved in development of the cranial neural crest, which is fated to form skeletal elements. Also required for otic placode specification during inner ear development.**Applications:** **WB** (1:1000-5000)
IHC-P (1:200-1000)
IHC-F (1:200-1000)
IF (1:200-1000)**Reactivity:** Human, Mouse, Rat**Predicted MW.:** 56 kDa**Subcellular Location:** Cytoplasm ,Nucleus**— VALIDATION IMAGES —**

25 ug total protein per lane of various lysates (see on figure) probed with SOX9 monoclonal antibody, unconjugated (bsm-63031R) at 1:2000 dilution and 4°C overnight incubation. Followed by conjugated secondary antibody incubation at r.t. for 60 min.



Paraformaldehyde-fixed, paraffin embedded Human Lung Cancer; Antigen retrieval by boiling in sodium citrate buffer (pH6.0) for 15 min; Antibody incubation with SOX9 Monoclonal Antibody, Unconjugated(bsm-63031R) at 1:400 overnight at 4°C, followed by conjugation to the bs-0295G-HRP and DAB (C-0010) staining.



Paraformaldehyde-fixed, paraffin embedded Rat Placenta; Antigen retrieval by boiling in sodium citrate buffer (pH6.0) for 15 min; Antibody incubation with SOX9 Monoclonal Antibody, Unconjugated(bsm-63031R) at 1:400 overnight at 4°C, followed by conjugation to the bs-0295G-HRP and DAB (C-0010) staining.