

bs-17496R**[Primary Antibody]****MAPKAP1/SIN1 Rabbit pAb****BioSS**
ANTIBODIES

www.bioss.com.cn

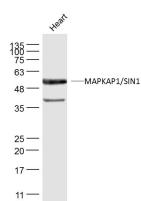
sales@bioss.com.cn

techsupport@bioss.com.cn

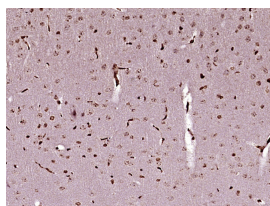
400-901-9800

— DATASHEET —

Host: Rabbit	Isotype: IgG	Applications: WB (1:500-2000)
Clonality: Polyclonal		IHC-P (1:100-500)
GeneID: 79109	SWISS: Q9BPZ7	IHC-F (1:100-500)
Target: MAPKAP1/SIN1		IF (1:100-500)
Immunogen: KLH conjugated synthetic peptide derived from human MAPKAP1/SIN1: 61-160/522.		Reactivity: Mouse (predicted: Human, Rat, Rabbit, Pig, Sheep, Cow, Dog, Horse, Rhesus monkey, Gorilla, Orangutan, Platypus)
Purification: affinity purified by Protein A		Predicted MW.: 30/50/65 (59) kDa
Concentration: 1mg/ml		Subcellular Location: Cell membrane ,Cytoplasm ,Nucleus
Storage: 0.01M TBS (pH7.4) with 1% BSA, 0.02% Proclin300 and 50% Glycerol. Shipped at 4°C. Store at -20°C for one year. Avoid repeated freeze/thaw cycles.		
Background: This gene encodes a protein that is highly similar to the yeast SIN1 protein, a stress-activated protein kinase. Alternatively spliced transcript variants encoding distinct isoforms have been described. Alternate polyadenylation sites as well as alternate 3' UTRs have been identified for transcripts of this gene. [provided by RefSeq, Jul 2008]		

— VALIDATION IMAGES —

Sample: Heart (Mouse) Lysate at 40 ug Primary:
Anti-MAPKAP1/SIN1 (bs-17496R) at 1/300
dilution Secondary: IRDye800CW Goat Anti-
Rabbit IgG at 1/20000 dilution Predicted band
size: 30/50/65 kD Observed band size: 50 kD



Paraformaldehyde-fixed, paraffin embedded
(Mouse brain); Antigen retrieval by boiling in
sodium citrate buffer (pH6.0) for 15min; Block
endogenous peroxidase by 3% hydrogen
peroxide for 20 minutes; Blocking buffer (normal
goat serum) at 37°C for 30min; Antibody
incubation with (MAPKAP1/SIN1) Polyclonal
Antibody, Unconjugated (bs-17496R) at 1:400
overnight at 4°C, followed by operating
according to SP Kit(Rabbit) (sp-0023)
instructions and DAB staining.