

**bs-17493R**

**[ Primary Antibody ]**

## SIL1 Rabbit pAb

**Bioss**  
ANTIBODIES

www.bioss.com.cn

sales@bioss.com.cn

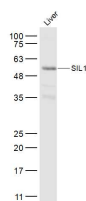
techsupport@bioss.com.cn

400-901-9800

### — DATASHEET —

<b>Host:</b> Rabbit	<b>Isotype:</b> IgG	<b>Applications:</b> WB (1:500-2000)
<b>Clonality:</b> Polyclonal		<b>Reactivity:</b> Mouse (predicted: Human, Rat, Pig, Dog, Horse)
<b>GeneID:</b> 64374	<b>SWISS:</b> Q9H173	
<b>Target:</b> SIL1		<b>Predicted MW.:</b> 49 kDa
<b>Immunogen:</b> KLH conjugated synthetic peptide derived from human SIL1: 101-200/461.		<b>Subcellular Location:</b> Cytoplasm
<b>Purification:</b> affinity purified by Protein A		
<b>Concentration:</b> 1mg/ml		
<b>Storage:</b> 0.01M TBS (pH7.4) with 1% BSA, 0.02% Proclin300 and 50% Glycerol. Shipped at 4°C. Store at -20°C for one year. Avoid repeated freeze/thaw cycles.		
<b>Background:</b> SIKE interacts with IKK-epsilon (IKBKE; MIM 605048) and TBK1 (MIM 604834) and acts as a suppressor of TLR3 (MIM 603029) and virus-triggered interferon activation pathways (Huang et al., 2005 [PubMed 16281057]).[supplied by OMIM, Mar 2008]		

### — VALIDATION IMAGES —



Sample: Liver (Mouse) Lysate at 40 ug Primary:

Anti-SIL1 (bs-17493R) at 1/300 dilution

Secondary: IRDye800CW Goat Anti-Rabbit IgG at

1/20000 dilution Predicted band size: 49 kD

Observed band size: 59 kD