

**bsm-42327M**

**[ Primary Antibody ]**

## E.coli BirA Mouse mAb

**BioSS**  
ANTIBODIES

www.bioss.com.cn

sales@bioss.com.cn

techsupport@bioss.com.cn

400-901-9800

### — DATASHEET —

**Host:** Mouse

**Clonality:** Monoclonal

**CloneNo.:** 7C2

**Target:** E.coli BirA

**Purification:** affinity purified by Protein A

**Storage:** 0.01M TBS(pH7.4) with 1% BSA, 0.02% Proclin300 and 50% Glycerol. Shipped at 4°C. Store at -20 °C for one year. Avoid repeated freeze/thaw cycles.

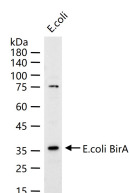
**Background:** This antibody reacts with Escherichia coli, Escherichia coli is a gram negative bacillus that belongs to a larger group of Enterobacteriaceae - bacteria that inhabit the gastrointestinal tract. Although usually a harmless resident of the gut, some strains have the potential to cause serious problems, especially where there is an immature immune system or immunosuppression, or where the subtype of organism has acquired the ability to produce pathogenic toxins.

**Applications:** WB (1:500-1:2000)

**Reactivity:** Escherichia Coli

**Predicted MW.:** 35 kDa

### — VALIDATION IMAGES —



25 ug total protein per lane of various lysates  
(see on figure) probed with E.coli BirA  
monoclonal antibody, unconjugated  
(bsm-42327M) at 1:1000 dilution and 4°C  
overnight incubation. Followed by conjugated  
secondary antibody incubation at r.t. for 60 min.