

bs-1103R**[Primary Antibody]****BioSS**
ANTIBODIES

www.bioss.com.cn

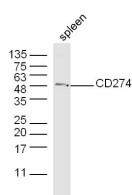
sales@bioss.com.cn

techsupport@bioss.com.cn

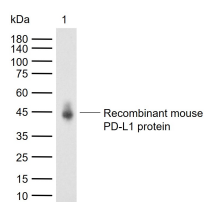
400-901-9800

PD-L1 Rabbit pAb**DATASHEET**

Host: Rabbit	Isotype: IgG	Applications: WB (1:500-2000)
Clonality: Polyclonal		Reactivity: Human, Mouse, Rat (predicted: Pig, Sheep, Cow, Horse)
GeneID: 60533	SWISS: Q9EP73	Predicted MW.: 32 kDa
Target: PD-L1		Subcellular Location: Secreted ,Extracellular matrix
Immunogen: KLH conjugated synthetic peptide derived from mouse B7-H1: 201-290/290.		
Purification: affinity purified by Protein A		
Concentration: 1mg/ml		
Storage: 0.01M TBS (pH7.4) with 1% BSA, 0.02% Proclin300 and 50% Glycerol. Shipped at 4°C. Store at -20°C for one year. Avoid repeated freeze/thaw cycles.		
Background: This gene encodes an immune inhibitory receptor ligand that is expressed by hematopoietic and non-hematopoietic cells, such as T cells and B cells and various types of tumor cells. The encoded protein is a type I transmembrane protein that has immunoglobulin V-like and C-like domains. Interaction of this ligand with its receptor inhibits T-cell activation and cytokine production. During infection or inflammation of normal tissue, this interaction is important for preventing autoimmunity by maintaining homeostasis of the immune response. In tumor microenvironments, this interaction provides an immune escape for tumor cells through cytotoxic T-cell inactivation. Expression of this gene in tumor cells is considered to be prognostic in many types of human malignancies, including colon cancer and renal cell carcinoma. Alternative splicing results in multiple transcript variants. [provided by RefSeq, Sep 2015]		

VALIDATION IMAGES

Sample: Spleen (Mouse) Lysate at 40 ug Primary:
Anti- CD274 (bs-1103R) at 1/300 dilution
Secondary: IRDye800CW Goat Anti-Rabbit IgG at
1/10000 dilution Predicted band size: 32 kD
Observed band size: 48 kD



Sample: Lane 1: Recombinant mouse PD-L1
protein, C-His (HEK293)(bs-43633P) Primary:
Anti-PD-L1 (bs-1103R) at 1/1000 dilution
Secondary: IRDye800CW Goat Anti-Rabbit IgG at
1/20000 dilution Predicted band size: 32 kDa
Observed band size: 45 kDa

SELECTED CITATIONS

- **[IF=16.6]** Wang Danyu. et al. Enrichment and sensing tumor cells by embedded immunomodulatory DNA hydrogel to inhibit postoperative tumor recurrence. NAT COMMUN. 2023 Jul;14(1):1-17 IF ;Mouse. 37500633
- **[IF=10.6]** Li Kangkang. et al. Reactive oxygen species/glutathione dual sensitive nanoparticles with encapsulation of miR155 and curcumin for synergized cancer immunotherapy. J NANOBIOTECHNOL. 2024 Dec;22(1):1-23 IHC ;Mouse. 38972995
- **[IF=9.918]** Jie Hao. et al. Multifunctional miR181a nanoparticles promote highly efficient radiotherapy for rectal

Important Note: This product as supplied is intended for research use only, not for use in human, therapeutic or diagnostic applications.

cancer. MATER TODAY ADV. 2022 Dec;16:100317 IHC ;Mouse. 10.1016/j.mtadv.2022.100317

- **[IF=7.9]** Huawei Li. et al. Huaier improves the efficacy of anti-PD-L1 Ab in the treatment of hepatocellular carcinoma by regulating tumor immune microenvironment. PHYTOMEDICINE. 2023 Nov;;155189 IHC ;Mouse. 37984124
- **[IF=6.968]** Nie, Ding. et al. The intestinal flora of patients with GHPA affects the growth and the expression of PD-L1 of tumor. 2021 Oct 13 IHC ;Mouse. 34647152