

CCL7 Rabbit pAb

Catalog Number: bs-42364R

Target Protein: CCL7

Concentration: 1mg/ml

Host: Rabbit

Clonality: Polyclonal

Applications: WB (1:500-2000)

Reactivity: Human

Predicted MW: 11 kDa

Subcellular: Secreted

Locations:

Entrez Gene: 6354

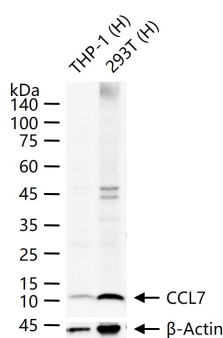
Swiss Prot: P80098

Purification: affinity purified by Protein A

Storage: Shipped at 4°C. Store at -20 °C for one year. Avoid repeated freeze/thaw cycles.

Background: This gene encodes monocyte chemotactic protein 3, a secreted chemokine which attracts macrophages during inflammation and metastasis. It is a member of the C-C subfamily of chemokines which are characterized by having two adjacent cysteine residues. The protein is an in vivo substrate of matrix metalloproteinase 2, an enzyme which degrades components of the extracellular matrix. This gene is part of a cluster of C-C chemokine family members on chromosome 17q. [provided by RefSeq, Jul 2008]

VALIDATION IMAGES



25 ug total protein per lane of various lysates (see on figure) probed with CCL7 polyclonal antibody, unconjugated (bs-42364R) at 1:1000 dilution and 4°C overnight incubation. Followed by conjugated secondary antibody incubation at r.t. for 60 min.