

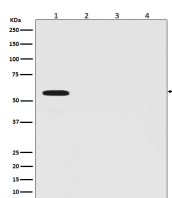
bsm-63023R**[Primary Antibody]****Firefly Luciferase Recombinant Rabbit mAb****BioSS**
ANTIBODIES

www.bioss.com.cn

sales@bioss.com.cn

techsupport@bioss.com.cn

400-901-9800

— DATASHEET —**Host:** Rabbit**Isotype:** IgG**Applications:** WB (1:500-2000)**Clonality:** Recombinant**ICC/IF** (1:50-200)**SWISS:** P08659**Predicted
MW.:** 61**Target:** Firefly Luciferase**Immunogen:** A synthesized peptide derived from Firefly luciferase: 152-201.**Purification:** affinity purified by Protein A**Subcellular
Location:** Cytoplasm**Storage:** 10mM phosphate buffered saline(pH 7.4) with 150mM sodium chloride, 0.05% BSA, 0.02% Proclin300 and 50% glycerol.
Store at 4°C for short term. Store at -20°C for long term. Avoid repeated freeze/thaw cycles.**Background:** Produces green light with a wavelength of 562 nm.**— VALIDATION IMAGES —**

Western blot analysis of (1) Firefly Luciferase transfected 293T cell lysate; (2) HeLa cell lysate; (3) NIH/3T3 cell lysate; (4) C6 cell lysate. Using Firefly Luciferase (bsm-63023R) monoclonal antibody at 1:1000 dilution and 4°C overnight incubation. Followed by conjugated secondary antibody incubation at r.t. for 60 min.