

bsm-63011R**[Primary Antibody]****Bioss**
ANTIBODIES

www.bioss.com.cn

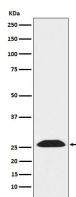
sales@bioss.com.cn

techsupport@bioss.com.cn

400-901-9800

UCHL3 Recombinant Rabbit mAb**— DATASHEET —**

Host: Rabbit	Isotype: IgG	Applications: WB (1:1000-1:2000) IHC-P (1:100-1:200) IHC-F (1:100-1:200) IF (1:100-1:200) Reactivity: Human, Mouse, Rat Predicted MW.: 26 Subcellular Location: Cytoplasm
Clonality: Recombinant		
GeneID: 7347	SWISS: P15374	
Target: UCHL3		
Immunogen: A synthesized peptide derived from human UCHL3: 200-230.		
Purification: affinity purified by Protein A		
Storage: 10mM phosphate buffered saline(pH 7.4) with 150mM sodium chloride, 0.05% BSA, 0.02% Proclin300 and 50% glycerol. Store at 4°C for short term. Store at -20°C for long term. Avoid repeated freeze/thaw cycles.		
Background: Deubiquitinating enzyme (DUB) that controls levels of cellular ubiquitin through processing of ubiquitin precursors and ubiquitinated proteins.		

— VALIDATION IMAGES —

Western blot analysis of K562 cell lysate. Using UCHL3 (bsm-63011R) monoclonal antibody at 1:1000 dilution and 4°C overnight incubation. Followed by conjugated secondary antibody incubation at r.t. for 60 min.