

**bs-11532R****[ Primary Antibody ]****PTPRN Rabbit pAb****BioSS**  
**ANTIBODIES**

www.bioss.com.cn

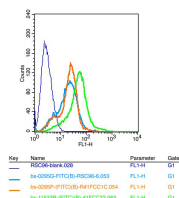
sales@bioss.com.cn

techsupport@bioss.com.cn

400-901-9800

**— DATASHEET —**

<b>Host:</b> Rabbit <b>Clonality:</b> Polyclonal <b>GeneID:</b> 5798 <b>Target:</b> PTPRN <b>Immunogen:</b> KLH conjugated synthetic peptide derived from human TPIA2: 501-600/979. < Extracellular > <b>Purification:</b> affinity purified by Protein A <b>Concentration:</b> 1mg/ml <b>Storage:</b> 0.01M TBS (pH7.4) with 1% BSA, 0.02% Proclin300 and 50% Glycerol. Shipped at 4°C. Store at -20°C for one year. Avoid repeated freeze/thaw cycles. <b>Background:</b> The protein encoded by this gene is a member of the protein tyrosine phosphatase (PTP) family. PTPs are known to be signaling molecules that regulate a variety of cellular processes including cell growth, differentiation, mitotic cycle, and oncogenic transformation. This PTP possesses an extracellular region, a single transmembrane region, and a single catalytic domain, and thus represents a receptor-type PTP. This PTP was found to be an autoantigen that is reactive with insulin-dependent diabetes mellitus (IDDM) patient sera, and thus may be a potential target of autoimmunity in diabetes mellitus. Alternate splicing results in multiple transcript variants.[provided by RefSeq, Dec 2010]	<b>Isotype:</b> IgG  <b>SWISS:</b> Q16849	<b>Applications:</b> Flow-Cyt (3µg/Test)  <b>Reactivity:</b> Rat (predicted: Human, Mouse, Pig, Sheep, Cow)  <b>Predicted MW.:</b> 102 kDa  <b>Subcellular Location:</b> Cell membrane
--	---	--

**— VALIDATION IMAGES —**

Positive control: RSC96 Isotype Control

Antibody: Rabbit IgG ; Secondary Antibody: Goat

anti-rabbit IgG-FITC, Dilution: 1:100 in 1 X PBS

containing 0.5% BSA ; Primary Antibody Dilution:

3µg in 100 µL 1X PBS containing 0.5% BSA.