

bsm-63007R

[Primary Antibody]

K27-linkage specific ubiquitin Recombinant Rabbit mAb

Bioss
ANTIBODIES

www.bioss.com.cn

sales@bioss.com.cn

techsupport@bioss.com.cn

400-901-9800

DATASHEET

Host: Rabbit

Isotype: IgG

Clonality: Recombinant

CloneNo.: 11E7

GeneID: 7314

SWISS: P0CG47

Target: K27-linkage specific ubiquitin

Immunogen: A synthesized peptide derived from human K27-linkage specific ubiquitin: NV-K(GGR)-AKI.

Purification: affinity purified by Protein A

Storage: 10mM phosphate buffered saline(pH 7.4) with 150mM sodium chloride, 0.05% BSA, 0.02% Proclin300 and 50% glycerol. Store at 4°C for short term. Store at -20°C for long term. Avoid repeated freeze/thaw cycles.

Background: Ubiquitin: Exists either covalently attached to another protein, or free (unanchored). When covalently bound, it is conjugated to target proteins via an isopeptide bond either as a monomer (monoubiquitin), a polymer linked via different Lys residues of the ubiquitin (polyubiquitin chains) or a linear polymer linked via the initiator Met of the ubiquitin (linear polyubiquitin chains).

Applications: **WB** (1:1000-2000)

IHC-P (1:100-500)

IHC-F (1:100-500)

IF (1:100-500)

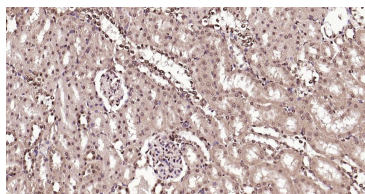
ICC/IF (1:50-200)

Reactivity: Human, Mouse, Rat

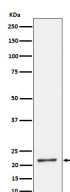
Predicted MW.: 26,77

Subcellular Location: Cytoplasm ,Nucleus

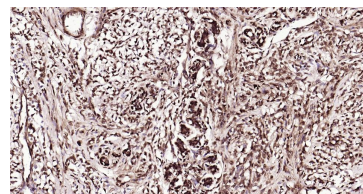
VALIDATION IMAGES



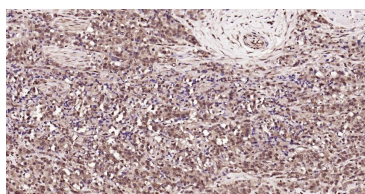
Paraformaldehyde-fixed, paraffin embedded Rat Kidney; Antigen retrieval by boiling in sodium citrate buffer (pH6.0) for 15 min; Antibody incubation with K27-linkage specific ubiquitin Monoclonal Antibody, Unconjugated(bsm-63007R) at 1:200 overnight at 4°C, followed by conjugation to the bs-0295G-HRP and DAB (C-0010) staining and DAB (C-0010) staining.



Western blot analysis of HeLa cell lysate. Using K27-linkage specific ubiquitin (bsm-63007R) monoclonal antibody at 1:1000 dilution and 4°C overnight incubation. Followed by conjugated secondary antibody incubation at r.t. for 60 min.



Paraformaldehyde-fixed, paraffin embedded Human Breast Cancer; Antigen retrieval by boiling in sodium citrate buffer (pH6.0) for 15 min; Antibody incubation with K27-linkage specific ubiquitin Monoclonal Antibody, Unconjugated(bsm-63007R) at 1:200 overnight at 4°C, followed by conjugation to the bs-0295G-HRP and DAB (C-0010) staining and DAB (C-0010) staining.



Paraformaldehyde-fixed, paraffin embedded Human Prostate Tumor; Antigen retrieval by boiling in sodium citrate buffer (pH6.0) for 15 min; Antibody incubation with K27-linkage specific ubiquitin Monoclonal Antibody, Unconjugated(bsm-63007R) at 1:200 overnight at 4°C, followed by conjugation to the bs-0295G-HRP and DAB (C-0010) staining and DAB (C-0010) staining.