

bsm-63005R**[Primary Antibody]****BioSS**
ANTIBODIES

www.bioss.com.cn

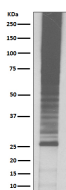
sales@bioss.com.cn

techsupport@bioss.com.cn

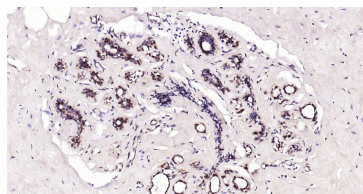
400-901-9800

K48-linkage specific ubiquitin Recombinant Rabbit mAb**— DATASHEET —**

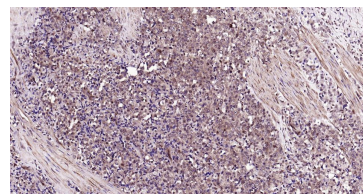
Host: Rabbit	Isotype: IgG	Applications: WB (1:500-2000) IHC-P (1:100-500) IHC-F (1:100-500) IF (1:100-500) Flow-Cyt (1:20-50) ICC/IF (1:50-200) Reactivity: Human, Mouse, Rat Predicted MW.: 26 Subcellular Location: Cytoplasm ,Nucleus
Clonality: Recombinant	CloneNo.: 20B9	
GeneID: 7314	SWISS: P0CG47	
Target: K48-linkage specific ubiquitin		
Immunogen: A synthesized peptide derived from human K48-linkage specific ubiquitin: AG-K-QL.		
Purification: affinity purified by Protein A		
Storage: 10mM phosphate buffered saline(pH 7.4) with 150mM sodium chloride, 0.05% BSA, 0.02% Proclin300 and 50% glycerol. Store at 4°C for short term. Store at -20°C for long term. Avoid repeated freeze/thaw cycles.		
Background: Ubiquitin: Exists either covalently attached to another protein, or free (unanchored). When covalently bound, it is conjugated to target proteins via an isopeptide bond either as a monomer (monoubiquitin), a polymer linked via different Lys residues of the ubiquitin (polyubiquitin chains) or a linear polymer linked via the initiator Met of the ubiquitin (linear polyubiquitin chains).		

— VALIDATION IMAGES —

Western blot analysis of Jurkat cell lysate. Using K48-linkage specific ubiquitin (bsm-63005R) monoclonal antibody at 1:1000 dilution and 4°C overnight incubation. Followed by conjugated secondary antibody incubation at r.t. for 60 min.



Paraformaldehyde-fixed, paraffin embedded Human Breast Cancer; Antigen retrieval by boiling in sodium citrate buffer (pH6.0) for 15 min; Antibody incubation with K48-linkage specific ubiquitin Monoclonal Antibody, Unconjugated(bsm-63005R) at 1:200 overnight at 4°C, followed by conjugation to the bs-0295G-HRP and DAB (C-0010) staining and DAB (C-0010) staining.



Paraformaldehyde-fixed, paraffin embedded Human Prostate Tumor; Antigen retrieval by boiling in sodium citrate buffer (pH6.0) for 15 min; Antibody incubation with K48-linkage specific ubiquitin Monoclonal Antibody, Unconjugated(bsm-63005R) at 1:200 overnight at 4°C, followed by conjugation to the bs-0295G-HRP and DAB (C-0010) staining and DAB (C-0010) staining.