

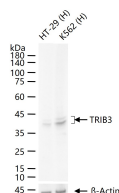
bsm-62999R**[Primary Antibody]****Bioss**
ANTIBODIES

www.bioss.com.cn

sales@bioss.com.cn

techsupport@bioss.com.cn

400-901-9800

TRIB3 Recombinant Rabbit mAb**— DATASHEET —****Host:** Rabbit**Isotype:** IgG**Clonality:** Recombinant**CloneNo.:** 12G3**GeneID:** 57761**SWISS:** Q96RU7**Target:** TRIB3**Applications:** **WB** (1:500-2000)
IP (1:20-50)**Reactivity:** Human**Immunogen:** A synthesized peptide derived from human TRIB3: 300-358/358.**Purification:** affinity purified by Protein A**Storage:** 10mM phosphate buffered saline(pH 7.4) with 150mM sodium chloride, 0.05% BSA, 0.02% Proclin300 and 50% glycerol.
Store at 4°C for short term. Store at -20°C for long term. Avoid repeated freeze/thaw cycles.**Predicted
MW.:** 40**Subcellular
Location:** Nucleus**Background:** Inactive protein kinase which acts as a regulator of the integrated stress response (ISR), a process for adaptation to various stress. Inhibits the transcriptional activity of DDIT3/CHOP and is involved in DDIT3/CHOP-dependent cell death during ER stress.**— VALIDATION IMAGES —**

25 ug total protein per lane of various lysates
(see on figure) probed with TRIB3 monoclonal
antibody, unconjugated (bsm-62999R) at 1:1000
dilution and 4°C overnight incubation. Followed
by conjugated secondary antibody incubation at
r.t. for 60 min.