

bsm-62994R**[Primary Antibody]****BioSS**
ANTIBODIES

www.bioss.com.cn

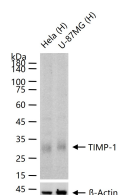
sales@bioss.com.cn

techsupport@bioss.com.cn

400-901-9800

TIMP-1 Recombinant Rabbit mAb**— DATASHEET —**

Host: Rabbit	Isotype: IgG	Applications: WB (1:500-1000) Reactivity: Human Predicted MW.: 23 Subcellular Location: Secreted
Clonality: Recombinant	CloneNo.: 3G17	
GeneID: 7076	SWISS: P01033	
Target: TIMP-1		
Immunogen: A synthesized peptide derived from human TIMP1: 1-207/207.		
Purification: affinity purified by Protein A		
Concentration: 1mg/ml		
Storage: 10mM phosphate buffered saline(pH 7.4) with 150mM sodium chloride, 0.05% BSA, 0.02% Proclin300 and 50% glycerol. Store at 4°C for short term. Store at -20°C for long term. Avoid repeated freeze/thaw cycles.		
Background: Metalloproteinase inhibitor that functions by forming one to one complexes with target metalloproteinases, such as collagenases, and irreversibly inactivates them by binding to their catalytic zinc cofactor.		

— VALIDATION IMAGES —

25 ug total protein per lane of various lysates (see on figure) probed with TIMP-1 monoclonal antibody, unconjugated (bsm-62994R) at 1:1000 dilution and 4°C overnight incubation. Followed by conjugated secondary antibody incubation at r.t. for 60 min.