

**bsm-62992R****[ Primary Antibody ]****BioSS**  
**ANTIBODIES**

www.bioss.com.cn

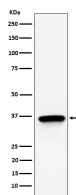
sales@bioss.com.cn

techsupport@bioss.com.cn

400-901-9800

**TIMM50 Recombinant Rabbit mAb****— DATASHEET —**

<b>Host:</b> Rabbit	<b>Isotype:</b> IgG	<b>Applications:</b> WB (1:1000-1:2000) <b>IHC-P</b> (1:100-1:200) <b>IHC-F</b> (1:100-1:200) <b>IF</b> (1:100-1:200)  <b>Reactivity:</b> Human, Mouse    <b>Predicted MW.:</b> 40  <b>Subcellular Location:</b> Cytoplasm ,Nucleus
<b>Clonality:</b> Recombinant		
<b>GeneID:</b> 92609	<b>SWISS:</b> Q3ZCQ8	
<b>Target:</b> TIMM50		
<b>Immunogen:</b> A synthesized peptide derived from human TIMM50: 25-77/353.		
<b>Purification:</b> affinity purified by Protein A		
<b>Storage:</b> 10mM phosphate buffered saline(pH 7.4) with 150mM sodium chloride, 0.05% BSA, 0.02% Proclin300 and 50% glycerol. Store at 4°C for short term. Store at -20°C for long term. Avoid repeated freeze/thaw cycles.		
<b>Background:</b> Essential component of the TIM23 complex, a complex that mediates the translocation of transit peptide-containing proteins across the mitochondrial inner membrane. Has some phosphatase activity in vitro; however such activity may not be relevant in vivo.		

**— VALIDATION IMAGES —**

Western blot analysis of 293T cell lysate. Using TIMM50 (bsm-62992R) monoclonal antibody at 1:1000 dilution and 4°C overnight incubation. Followed by conjugated secondary antibody incubation at r.t. for 60 min.