

bsm-62988R**[Primary Antibody]****BioSS**
ANTIBODIES

www.bioss.com.cn

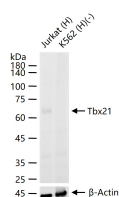
sales@bioss.com.cn

techsupport@bioss.com.cn

400-901-9800

Tbx21 Recombinant Rabbit mAb**— DATASHEET —**

Host: Rabbit	Isotype: IgG	Applications: WB (1:500-2000) Flow-Cyt (1:50-100) Reactivity: Human Predicted MW.: 58 Subcellular Location: Nucleus
Clonality: Recombinant	CloneNo.: 19E12	
GeneID: 30009	SWISS: Q9UL17	
Target: Tbx21		
Immunogen: A synthesized peptide derived from human TBX21: 500-535/535.		
Purification: affinity purified by Protein A		
Storage: 10mM phosphate buffered saline(pH 7.4) with 150mM sodium chloride, 0.05% BSA, 0.02% Proclin300 and 50% glycerol. Store at 4°C for short term. Store at -20°C for long term. Avoid repeated freeze/thaw cycles.		
Background: Lineage-defining transcription factor which initiates Th1 lineage development from naive Th precursor cells both by activating Th1 genetic programs and by repressing the opposing Th2 and Th17 genetic programs. Activates transcription of a set of genes important for Th1 cell function, including those encoding IFN-gamma and the chemokine receptor CXCR3. Induces permissive chromatin accessibility and CpG methylation in IFNG.		

— VALIDATION IMAGES —

25 ug total protein per lane of various lysates (see on figure) probed with Tbx21 monoclonal antibody, unconjugated (bsm-62988R) at 1:1000 dilution and 4°C overnight incubation. Followed by conjugated secondary antibody incubation at r.t. for 60 min.