

**bsm-62982R****[ Primary Antibody ]****SNAP25 Recombinant Rabbit mAb****BioSS**  
**ANTIBODIES**

www.bioss.com.cn

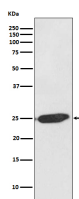
sales@bioss.com.cn

techsupport@bioss.com.cn

400-901-9800

**— DATASHEET —**

<b>Host:</b> Rabbit	<b>Isotype:</b> IgG	<b>Applications:</b> <b>WB</b> (1:1000-2000) <b>ICC/IF</b> (1:50-200) <b>IP</b> (1:20-50)  <b>Reactivity:</b> Human, Mouse, Rat   <b>Predicted MW.:</b> 23  <b>Subcellular Location:</b> Cell membrane ,Cytoplasm
<b>Clonality:</b> Recombinant		
<b>GeneID:</b> 6616	<b>SWISS:</b> P60880	
<b>Target:</b> SNAP25		
<b>Immunogen:</b> A synthesized peptide derived from human SNAP25: 164-206.		
<b>Purification:</b> affinity purified by Protein A		
<b>Storage:</b> 10mM phosphate buffered saline(pH 7.4) with 150mM sodium chloride, 0.05% BSA, 0.02% Proclin300 and 50% glycerol. Store at 4°C for short term. Store at -20°C for long term. Avoid repeated freeze/thaw cycles.		
<b>Background:</b> t-SNARE involved in the molecular regulation of neurotransmitter release. May play an important role in the synaptic function of specific neuronal systems. Associates with proteins involved in vesicle docking and membrane fusion. Regulates plasma membrane recycling through its interaction with CENPF. Modulates the gating characteristics of the delayed rectifier voltage-dependent potassium channel KCNB1 in pancreatic beta cells.		

**— VALIDATION IMAGES —**

Western blot analysis of SH-SY5Y cell lysate.  
Using SNAP25 (bsm-62982R) monoclonal antibody at 1:1000 dilution and 4°C overnight incubation. Followed by conjugated secondary antibody incubation at r.t. for 60 min.