

bsm-62980R**[Primary Antibody]**

Phospho-SMC1 alpha (Ser957) Recombinant Rabbit mAb

Bioss
ANTIBODIES

www.bioss.com.cn

sales@bioss.com.cn

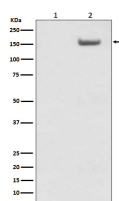
techsupport@bioss.com.cn

400-901-9800

DATASHEET

Host: Rabbit**Isotype:** IgG**Clonality:** Recombinant**GeneID:** 27127**SWISS:** Q14683**Target:** Phospho-SMC1 alpha (Ser957)**Immunogen:** A synthesized peptide derived from human SMC1 alpha around the phosphorylation site of S957: EGS-pS-QG(全长1233aa).**Purification:** affinity purified by Protein A**Storage:** 10mM phosphate buffered saline(pH 7.4) with 150mM sodium chloride, 0.05% BSA, 0.02% Proclin300 and 50% glycerol. Store at 4°C for short term. Store at -20°C for long term. Avoid repeated freeze/thaw cycles.**Background:** Involved in chromosome cohesion during cell cycle and in DNA repair. Central component of cohesin complex. The cohesin complex is required for the cohesion of sister chromatids after DNA replication. The cohesin complex apparently forms a large proteinaceous ring within which sister chromatids can be trapped.**Applications:** WB (1:1000-1:2000)**IHC-P** (1:100-1:200)**IHC-F** (1:100-1:200)**IF** (1:50-1:200)**ICC/IF** (1:50-1:200)**Reactivity:** Human**Predicted
MW.:** 143**Subcellular
Location:** Nucleus

VALIDATION IMAGES



Western blot analysis of (1) HeLa cell lysate; (2) HeLa cells lysate treated with AP. Using Phospho-SMC1 alpha (Ser957) (bsm-62980R) monoclonal antibody at 1:1000 dilution and 4°C overnight incubation. Followed by conjugated secondary antibody incubation at r.t. for 60 min.