

**bsm-62973R****[ Primary Antibody ]****BioSS**  
**ANTIBODIES**

www.bioss.com.cn

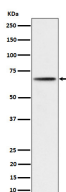
sales@bioss.com.cn

techsupport@bioss.com.cn

400-901-9800

**phospho-RPS6KB2 (Ser370) Recombinant Rabbit mAb****— DATASHEET —**

<b>Host:</b> Rabbit	<b>Isotype:</b> IgG	<b>Applications:</b> WB (1:1000-2000)
<b>Clonality:</b> Recombinant		<b>Reactivity:</b> Human, Mouse, Rat
<b>GeneID:</b> 6199	<b>SWISS:</b> Q9UBS0	
<b>Target:</b> RPS6KB2 (Ser370)		
<b>Immunogen:</b> A synthesized peptide derived from human p70 S6 kinase beta 2 around the phosphorylation site of S370: TPVD-pS-PDD.		<b>Predicted MW.:</b> 53
<b>Purification:</b> affinity purified by Protein A		<b>Subcellular Location:</b> Cytoplasm ,Nucleus
<b>Storage:</b> 10mM phosphate buffered saline(pH 7.4) with 150mM sodium chloride, 0.05% BSA, 0.02% Proclin300 and 50% glycerol. Store at 4°C for short term. Store at -20°C for long term. Avoid repeated freeze/thaw cycles.		
<b>Background:</b> Phosphorylates specifically ribosomal protein S6. Seems to act downstream of mTOR signaling in response to growth factors and nutrients to promote cell proliferation, cell growth and cell cycle progression in an alternative pathway regulated by MEAK7.		

**— VALIDATION IMAGES —**

Western blot analysis of 293 cell lysate. Using Phospho-RPS6KB2 (Ser370) (bsm-62973R) monoclonal antibody at 1:1000 dilution and 4°C overnight incubation. Followed by conjugated secondary antibody incubation at r.t. for 60 min.