

bsm-62970R**[Primary Antibody]****Bioss**
ANTIBODIES

www.bioss.com.cn

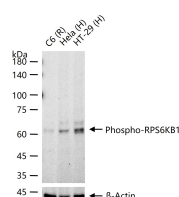
sales@bioss.com.cn

techsupport@bioss.com.cn

400-901-9800

Phospho-RPS6KB1 (Thr421/Ser424) Recombinant Rabbit mAb**— DATASHEET —**

Host: Rabbit	Isotype: IgG	Applications: WB (1:500-1:2000) IP (1:20-1:50) Reactivity: Human, Rat Predicted MW.: 59 Subcellular Location: Cytoplasm ,Nucleus
Clonality: Recombinant	CloneNo.: 18F4	
GeneID: 6198	SWISS: P23443	
Target: Phospho-RPS6KB1 (Thr421/Ser424)		
Immunogen: A synthesized peptide derived from human p70 S6 Kinase around the phosphorylation site of T421/S424: PR-pT-PV-pS-PV.		
Purification: affinity purified by Protein A		
Storage: 10mM phosphate buffered saline(pH 7.4) with 150mM sodium chloride, 0.05% BSA, 0.02% Proclin300 and 50% glycerol. Store at 4°C for short term. Store at -20°C for long term. Avoid repeated freeze/thaw cycles.		
Background: Acts to integrate nutrient and growth factor signals in regulation of protein synthesis, cell proliferation, cell growth, cell cycle progression and cell survival. Downstream effector of the mTOR signaling pathway.		

— VALIDATION IMAGES —

25 ug total protein per lane of various lysates (see on figure) probed with Phospho-RPS6KB1 monoclonal antibody, unconjugated (bsm-62970R) at 1:1000 dilution and 4°C overnight incubation. Followed by conjugated secondary antibody incubation at r.t. for 60 min.